



General Information

Program Director: Sharon McGoldrick

Training Period: Aug to Aug or February to February

Deadline to Apply: January 1, September 1

Fee/Cost: No tuition

Class Size: Up to 14

Phone No. 916-731-3800

Address: 3740 Business Drive
Sacramento, CA 95820

E-mail: skmcgoldrick@ucdavis.edu

Affiliated Hospitals

- Sutter Memorial Hospital, Sacramento
- Memorial Medical Center, Modesto
- Marshall Medical Center, Placerville

Application Procedures

1. Access the on-line application:

http://www.ucdmc.ucdavis.edu/pathology/education/cls_training_program/

2. Submit the following:

- A completed application including the personal statement.
- Three recommendation letters (submitted by applicant recommenders, directly to the application portal)

2. Transcripts are NOT needed for initial program application. If the applicant is invited for an interview, they will be notified where to send transcripts to the program office. All self-reported GPAs must be verified through the applicant's official transcripts prior to acceptance.

Process for Securing a CLS License

1. Complete a baccalaureate degree ensuring the state required courses for the CLS Training License are met.
2. Apply for a CA CDPH issued CLS Training License
3. Apply and be accepted into a state approved CLS training program.
4. Complete a 52-week CLS Training Program
5. Successfully pass the ASCP BOC exam
6. Apply and be issued your CA CLS license.

Accreditation

This training program is approved by the California Department of Public Health Services and is accredited through the National Accrediting Agency for Clinical Laboratory Sciences (NAACLS).

NAACLS

5600 N. River Rd. Suite 720

Rosemont, IL 60018-5119

Phone No. 847-939-3597 or 773-714-8880

<https://www.naacls.org/about.aspx>

California Trainee License

Department of Health Services

Laboratory Field Services, State of California

850 Marina Bay Parkway

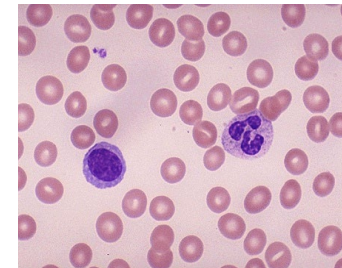
Richmond, CA 94804-6403

Website: cdph.ca.gov/Programs/OSPHLD/LFS/Pages/CLS-Trainee.aspx

Email: LFSscientist@cdph.ca.gov

Non-US Transcript Evaluation

Potential CLS students applying with non-US transcripts must have transcripts evaluated by a company approved by both CDPH-LFS and ASCP. Please refer to these licensing and certification agencies for additional information to ensure the transcript evaluation will be accepted for both the CA CLS training license and ASCP BOC exam registration. UCDH will accept any valid evaluation performed by an agency approved by CDPH and ASCP.



UC Davis Medical Center Clinical Laboratory Science Training Program

https://health.ucdavis.edu/pathology/education/cls_training_program/information.html



University of California, Davis Health System consists of three major entities: the UC Davis School of Medicine, UC Davis Medical Center–Hospital and Clinics, and the UC Davis Medical Group. The UC Davis Medical Center (UCDMC) is an acute care general hospital licensed for 619 beds and is the major teaching facility for the UC Davis School of Medicine. The medical campus is in Sacramento three miles from the state capitol and 18 miles from the Davis campus. The UC Davis Health System serves a metropolitan area approaching one million residents. As a center for patient referral in Northern California, UCDMC provides regional trauma, burn, and poison control services for this area.

Program History

The Pathology Department established the training program in 1942 with the primary goal to provide well-trained laboratory personnel for the UC Davis Medical Center and the surrounding community. Since the program's inception, over 600 students have completed the training program and passed the national certification and state licensure examinations.

Program Mission Statement

The School of Clinical Laboratory Science provides trainees with the knowledge, abilities and skills needed to excel as competent clinical laboratory scientists through our teaching and by our own example as practicing professionals.

Program Goals

- Provide trainees with the best quality education in all aspects of clinical laboratory science
- Promote patient safety and quality standards
- Promote expanded roles and contributions of clinical laboratory professionals to the healthcare team
- Provide leadership in educating other health personnel and community population
- Promote professionalism, honesty, integrity, and compassion

Revised October 1, 2024

Program Description

Students entering this program must have a posted baccalaureate degree and will continue their education for twelve months with the Department of Pathology and Laboratory Medicine. The program teaching coordinators plan, oversee, and document the students' education. Students rotate through each section of the clinical laboratory, performing routine and specialized test procedures. Formal didactic lectures include hematology, immuno-hematology, clinical biochemistry, microbiology, safety, management, educational methodology, serology, coagulation, quality assurance and quality improvement, and other specialized areas. Lectures and clinical laboratory rotation encompass 40 hours per week for a twelve-month period beginning in March and September each year. Students are prepared with theoretical and practical skills to enter the field. Graduates of the program are awarded a certificate of completion (*certificate is not contingent upon passing the certifying exam*) and are eligible for the national certifying examination (ASCP).

UC DAVIS HEALTH SYSTEM CLS TRAINING COURSES AND CREDIT HOURS

Unit 1	
CLS 300 Immuno-hematology	3.0
CLS 310.A Clinical Chemistry I	3.0
CLS 320.A Clinical Hematology I	3.0
CLS 330.A Laboratory Operations I	0.5
CLS 340 Toxicology	1.0
CLS 350.A Microbiology I	3.0
Total Semester Hours for Unit 1	13.5
Unit 2	
CLS 310.B Clinical Chemistry II	3.0
CLS 320.B Clinical Hematology II	2.5
CLS 330.B Laboratory Operations II	0.5
CLS 350.B Microbiology II	3.0
CLS 360 Immunology	2.0
CLS 370 Special Chemistry	1.5
CLS 380 Molecular Pathology	1.0
Total Semester Hours for Unit 2	13.5
Unit 3	
CLS 310.C Clinical Chemistry III	2.5
CLS 320.C Clinical Hematology III	2.5
CLS 350.C Microbiology III	2.5
CLS 400 Student Collaborative Project	1.5
Total Semester Hours for Unit 3	9.0
Total for 12- month training CLS curriculum	36.0

Admission Requirements

Students must have a baccalaureate degree from an accredited university or college with both a **Cumulative and Science** GPA of 3.0 or above. The minimum coursework requirements include:

Chemistry: 16 semester hours or equivalent quarter hours including instruction in **analytical chemistry/quantitative analysis** (clinical chemistry is not accepted in place of an analytical chemistry course at UCDH) and biochemistry.

Biological Sciences: 18 semester hours or equivalent quarter hours including instruction in immunology, hematology (with lab preferred), and medical microbiology (with lab preferred).

Physics: Three semester hours or equivalent quarter hours including light and electricity.

Math: College algebra or higher.

Required biology courses for the CLS Training License must be completed with a B grade or higher.

Course work in biochemistry, hematology, immunology, and medical microbiology must be completed within **five years of first-time application.**

Unqualified Applicants

- *Coursework in required biology completed more than five years from first time application.*
- *C grades in any required courses*
- *Nonlocal applicant- working > 45 minutes from a training site*
- *Science GPA < 3.0*

