



## New and Notable in Diversity, Equity, and Inclusion



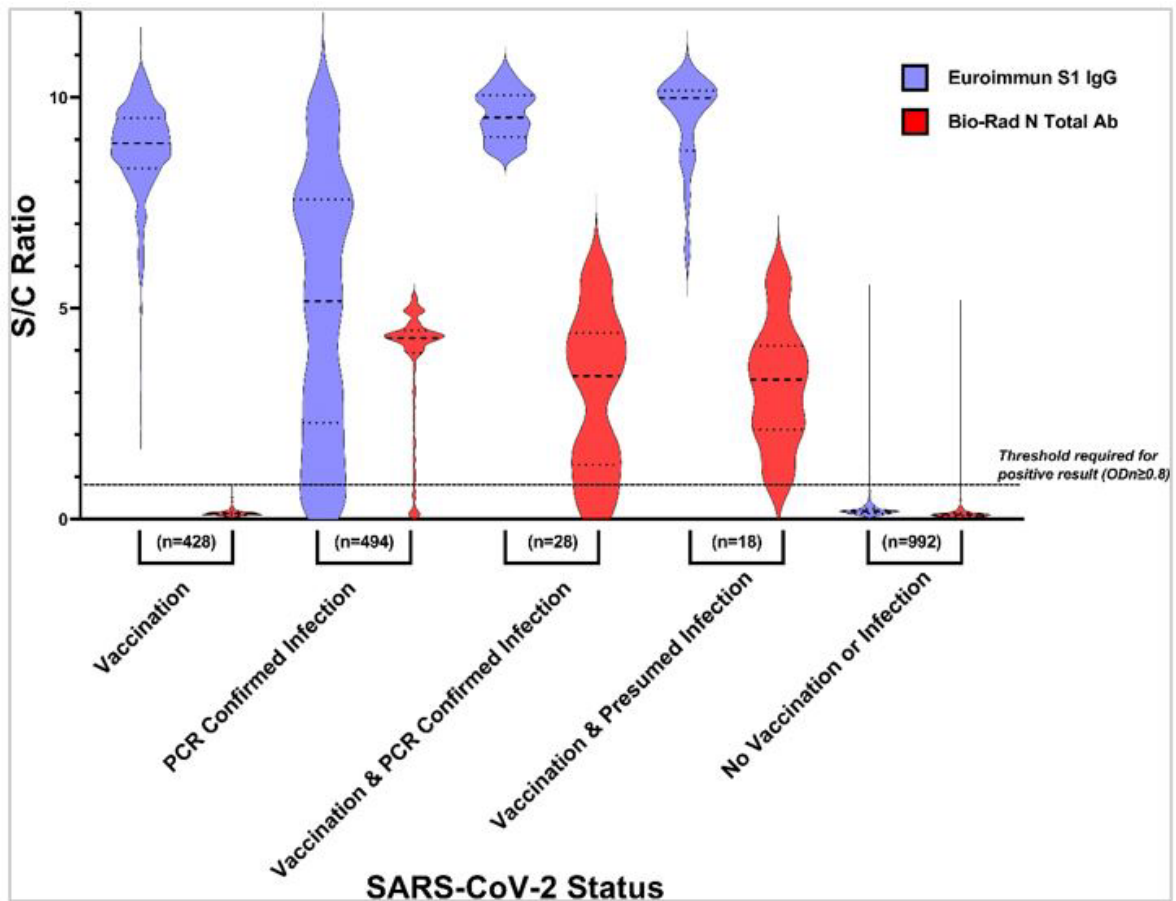
ASM is devoted to fighting social injustice and racial disparities while also addressing systemic inequities in the microbial sciences around the world. [ASM Journals](#) supports this commitment by building diverse editorial boards, allowing authors to make name change updates to their published records, and by publishing papers that help further advance microbial science to the benefit of all people. Discover some of these papers below when you explore the [Diversity, Equity, and Inclusion \(DEI\) New and Notable Collection](#) -- a list of popular, Editor-selected articles addressing diversity and inclusion in science and science education, as well as articles highlighting neglected diseases affecting underrepresented populations.

**Diversity, Equity, and Inclusion is just one of several topics featured in the New and Notable Collection series.**

Stay current in the latest research in your field when you sign up to receive notable articles based on the area(s) most relevant to your interest or profession. Click the button below and fill out the short form to receive more papers handpicked by our Editors, including open access articles like several of those included in the current collection – each one denoted by the orange lock icon.

[Choose Your Content](#)

## Explore the Latest Papers



**FIG 3.** Comparison of ELISA values between vaccinated and previously infected individuals. (Journal of Clinical Microbiology® “Differentiation of Individuals Previously Infected with and Vaccinated for SARS-CoV-2 in an Inner-City Emergency Department”)

Journal of Clinical Microbiology®

### **Differentiation of Individuals Previously Infected with and Vaccinated for SARS-CoV-2 in an Inner-City Emergency Department**

Clinical Microbiology Reviews®

### **Echinococcoses in Iran, Turkey, and Pakistan: Old Diseases in the New Millennium**

Explore the Collection

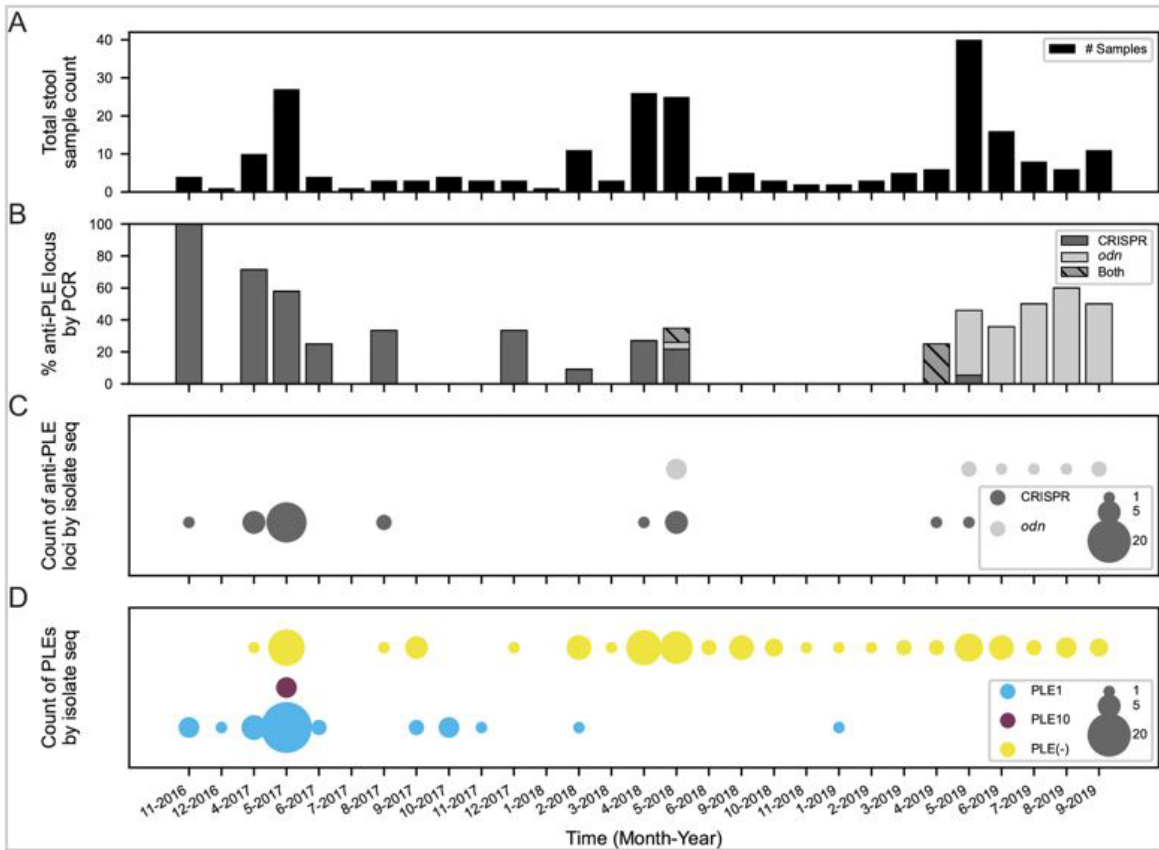




FIG 1. Surveillance of *V. cholerae* PLE and ICP1 anti-PLE loci in Bangladesh. (mBio® “Evolutionary Sweeps of Subviral Parasites and Their Phage Host Bring Unique Parasite Variants and Disappearance of a Phage CRISPR-Cas System”)

 | mBio®

**Evolutionary Sweeps of Subviral Parasites and Their Phage Host Bring Unique Parasite Variants and Disappearance of a Phage CRISPR-Cas System**

 | Microbiology Resource Announcements®

**ggpubfigs: Colorblind-Friendly Color Palettes and ggplot2 Graphic System Extensions for Publication-Quality Scientific Figures**

 | mSphere®

**Why Do We Need To Diversify the Microbial Sciences?**

 | Microbiology Spectrum®

**Upper Respiratory Tract Microbiome of Australian Aboriginal and Torres Strait Islander Children in Ear and Nose Health and Disease**

 | mSystems®

**Twenty Important Research Questions in Microbial Exposure and Social Equity**

[Explore the Collection](#)

## Notable Updates from ASM

### ***mSystems*® Special Series on Microbes and Social Equity**

**mSystems**® is pleased to announce an ongoing special series of content that addresses Social Equity and Disparities in Microbial Exposure. The [collection](#) highlights recent investigations into beneficial and detrimental instances of microbial exposure, in the context of how social policy may mediate or deepen disparities between and within populations. The series is associated with the [Microbes and Social Equity Working Group](#), spearheaded by *mSystems* Editor Sue Ishaq, who will also be presenting the following related sessions at ASM Microbe:

- [Microbes and Social Equity: the Microbial Components of Social, Environmental, and Health Justice](#)
- [Field Work & DEI Part 1: Fostering Equitable Partnerships with the Communities in Your Field Work Location](#)
- [Microbes and Social Equity: what is it and how do we do it?](#)

Add these sessions to your itinerary at Microbe, which are part of the DEI curated itinerary at the event, and view the entire Social Equity and Disparities in Microbial Exposure Collection from *mSystems* now.

[View the Collection](#)

## **Connect with URM Researchers at ASM Microbe**

Want to connect with and support researchers from underrepresented groups? ASM is committed to ensuring diversity in the science and scientists represented at [ASM Microbe 2022](#). Our expert-curated sessions in the [Diversity, Equity, and Inclusion \(DEI\) itinerary](#) span multiple tracks and provide unparalleled opportunities to build meaningful relationships. Add sessions like, [Rebranding the Scientist Mold with the Next Generation of Microbiologists](#), to your schedule to hear from junior investigators who embody the characteristics of future global leaders in the microbial sciences and learn about their scientific work and vision for a more inclusive society. Plus, there's much more in store when you join us June 9-13 in Washington, DC. Don't miss your chance to be part of the return of ASM Microbe in-person!

[Join Us](#)