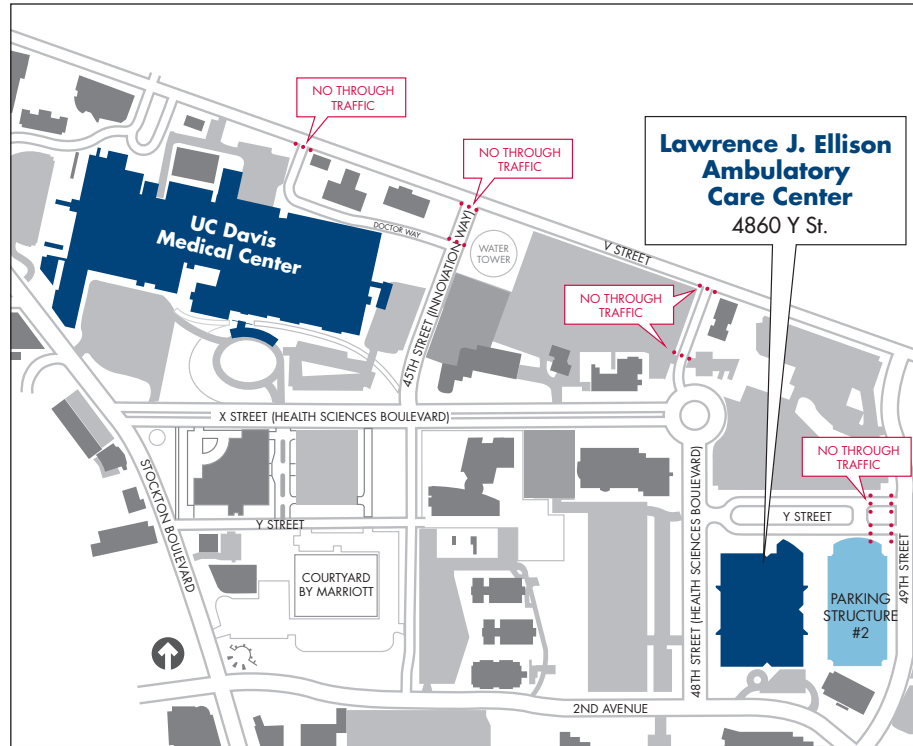


### FLOOR 3

KEY: **E** Elevator **S** Stairs **R** Restroom **☎** Phone **W** Waiting Room

Department	floor	suite	location
Alzheimer's Clinic	3	3900	1
Chronic Disease Management (CDM)	3	3200	2
Telemedicine	3	3500	3

Conference Rooms	floor	suite	location
Room 3301 • Training Room	3	3301	17
Room 3300-E	3	3300	16
Room 3030-C	3	3030-C	19
Room 3015-A	3	3015-A	21
Room 3010-A	3	3010-A	15
Room 3013	3	3013	18
Room 3015-B	3	3015-B	20



Please bring your parking ticket for validation.  
Thank you for choosing UC Davis Health System.

### UCDAVIS HEALTH SYSTEM

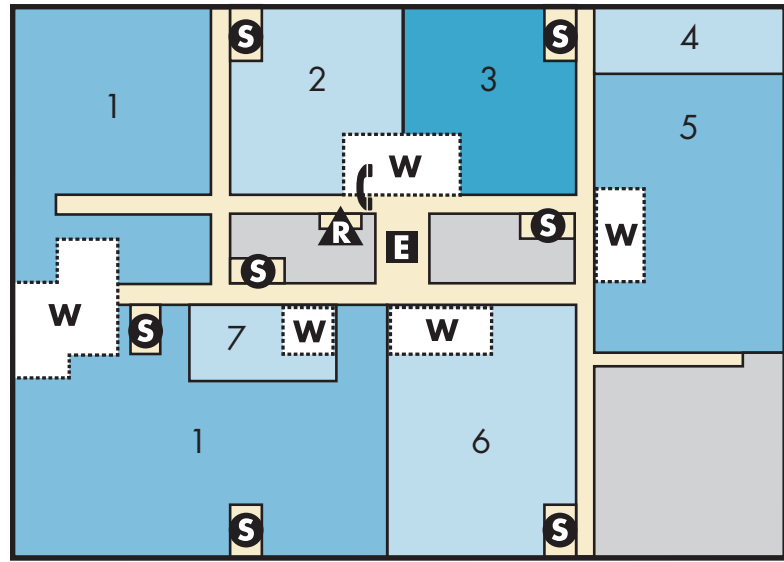
LAWRENCE J. ELLISON  
AMBULATORY CARE CENTER  
4860 Y Street  
Sacramento, CA 95817  
916-734-2011

[medicalcenter.ucdavis.edu](http://medicalcenter.ucdavis.edu)



## Finding your way

Lawrence J. Ellison Ambulatory Care Center floor guide

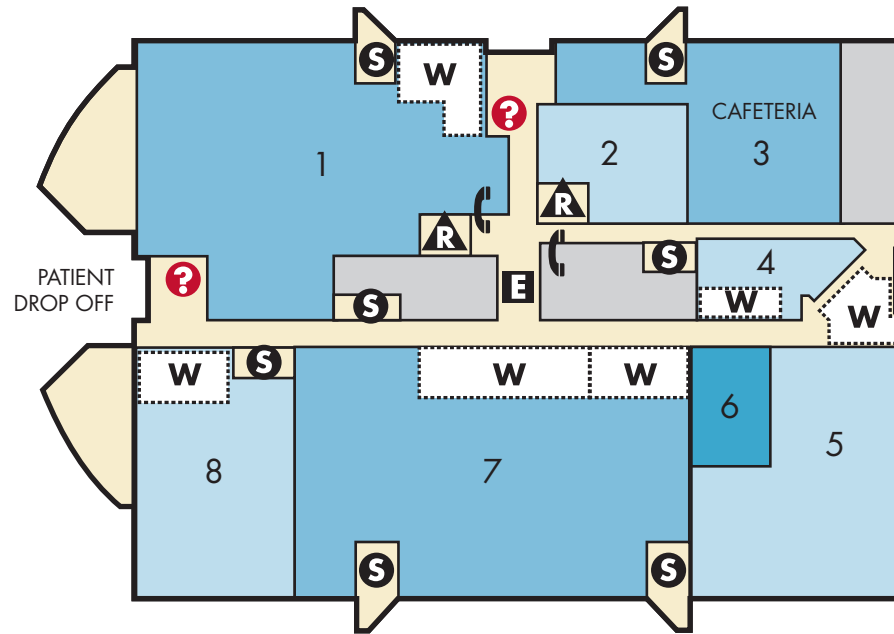


## LOWER LEVEL

KEY: **E** Elevator **S** Stairs **R** Restroom **P** Phone **W** Waiting Room

Department	floor	suite	location
Breast Health	LL	0540	7
Cardiac Rehabilitation	LL	0214	4
Cardiology and Nephrology	LL	0200	5
Internal Medicine • general medicine, infectious diseases, travel clinic, geriatrics, rheumatology	LL	0101	2
Internal Medicine • general medicine, endocrinology, allergy, thyroid, rheumatology, Coumadin clinic, IMPACT clinic, diabetes, nutrition	LL	0400	6
Neurology and Neurosurgery	LL	0100	3
Radiology • PET, CT, ultrasound, vascular lab, mammography, MRI	LL	0500 & 0600	1

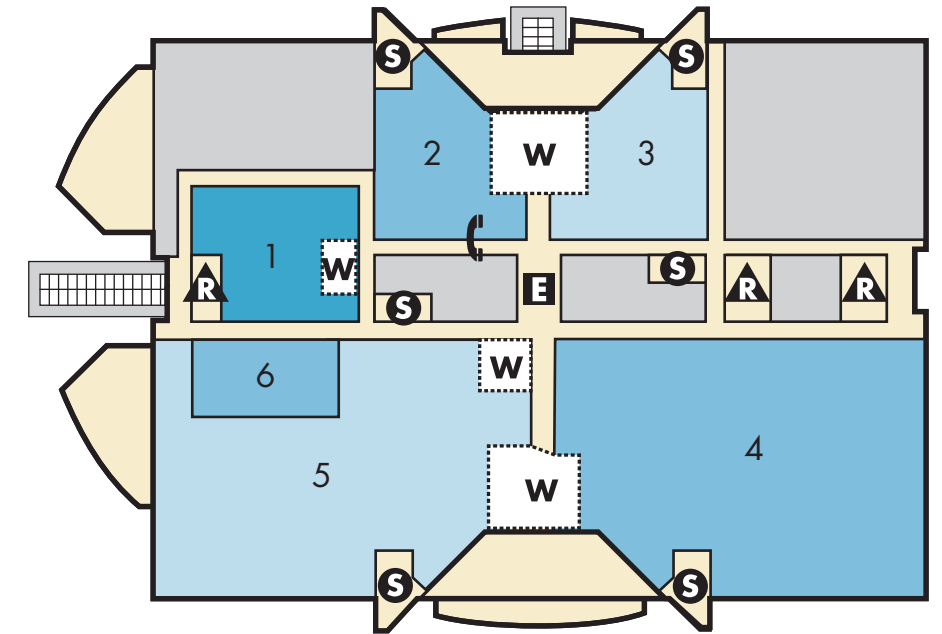
▲ PARKING STRUCTURE 2



## FLOOR 1

KEY: **E** Elevator **S** Stairs **R** Restroom **P** Phone **W** Waiting Room **I** Information Desk

Department	floor	suite	location
Family Practice	1	1600	5
Laboratory Services	1	1500	4
Orthopaedics	1	1700	7
Pharmacy	1	1200	2
Physical Medicine and Rehabilitation • EMG clinic	1	1700	7
Physical and Occupational Therapy • hand, occupational, orthotics, physical and speech therapies	1	1100	1
Radiology • DEXA, MRI, x-ray	1	1800	8
Surgical Admissions Center	1	1701	6
<b>Cafeteria</b>	<b>floor</b>	<b>suite</b>	<b>location</b>
Café and Dining Area • hours 7 a.m. to 2:30 p.m.	1	1300	3



## FLOOR 2

KEY: **E** Elevator **S** Stairs **R** Restroom **P** Phone **W** Waiting Room

Department	floor	suite	location
OB/GYN	2	2500	5
Ophthalmology	2	2400	4
Pain Intervention	2	2600	6
Pain Intervention • special procedure	2	2700	1
Urology	2	2200	3
Vascular	2	2100	2