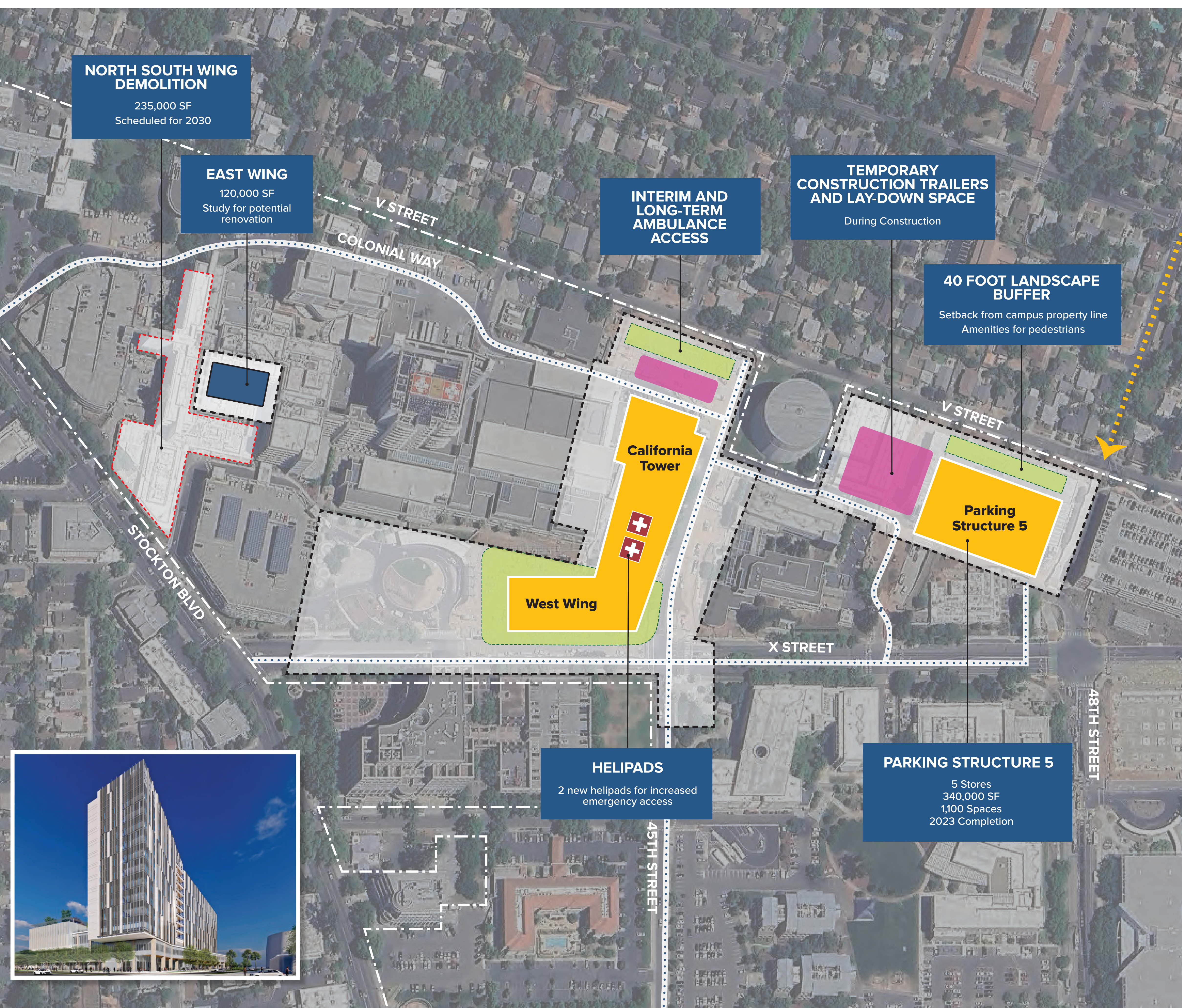


UC DAVIS HEALTH - CALIFORNIA TOWER



California Tower Details

\$3.7 Billion <i>Project Cost</i>	909,000 GSF <i>of Building Space</i>	
Basic Program	334 <i>Beds</i>	12 <i>Hybrid Operating Rooms</i>
Number of Stories & Height	<i>Tower:</i> 14	<i>West Wing:</i> 5
<i>Tower at Roofline:</i> 237ft	<i>Helipad Elevation:</i> 247ft	<i>Tower Elevator Over-Ride:</i> 267ft
		<i>West Wing:</i> 86ft

Licensed Bed Count for Main Hospital

Building	Current Beds	Currently Proposed
East Wing	135	0
University Tower	155	89
Davis Tower	303	260
SES Pavilion	32	19
California Tower	0	334
Subtotal	625	702

November 2024