

UC DAVIS HEALTH BUILDING DEPARTMENT

APPROVED

REVIEWED FOR CODE COMPLIANCE

The set of plans and specifications must be kept on the job site at all times and it is unlawful to make any changes or alterations to the approved set without written permission from the Building Department.
The approval of this plan and specifications SHALL NOT be held to permit or approve the violation of any University Policy or State Building Code.

BY: Paul R. Menard AIA CBO DATE: 10/07/2024

PROJECT #: UCDH-2023-0195

UC Davis Health
Sacramento, CA 95817



**OFFICE OF THE STATE FIRE MARSHAL
APPROVED FIRE AND PANIC ONLY**

William Gilliland
for
UCDH Lead DCFM
DATE: 10/07/2024

Approval of this plan does not authorize or approve any omission or deviation from applicable regulations. Final approval is subject to field inspection. One set of approved plans shall be available on the project site at all times.

This approval includes 16 pages.

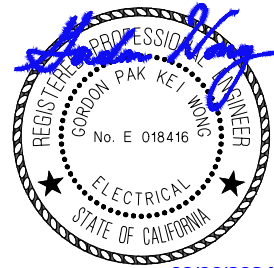
FIRE ALARM EQUIPMENT

FIRE ALARM SYSTEM T.I.

UCDMC BLDG 98
ACC ROOM 0611 RAD CT SCANNER
A/C # 9557730



Project Number I398
Contact JOHNNY
400 R Street, Ste 333
Sacramento, CA 95811
916.256.2460
Sacramento | Alameda | Irvine



09/06/2024

Submitted by:
Scott Athey

Account Executive – Fire Alarm & Security

JCI Contract: TBD

Johnson Controls, Inc.
103 Woodmere Road, Suite 110
Folsom, CA 95630
Tel: (916) 550-2565

TABLE OF CONTENTS

FIRE ALARM SYSTEM ADDITION

<u>PART#</u>	<u>DESCRIPTION</u>	<u>MFG</u>	<u>PAGE</u>
STWC	Fire Alarm Ceiling Strobe	Cooper/Wheelock	3-6
<i>CSFM LISTING:</i>	<i>7125-0785:0168</i>		7
FM998	Magnetic Hold Open	Notifier	8-9
<i>CSFM LISTING:</i>	<i>3550-0028:0210</i>		10
HFP-PS6B	New NAC Power Supply	Notifier	11-13
<i>CSFM LISTING:</i>	<i>7315-0028:0513</i>		14-15

Exceder Strobe, Horn Strobe, and Horn Notification Appliances



Description

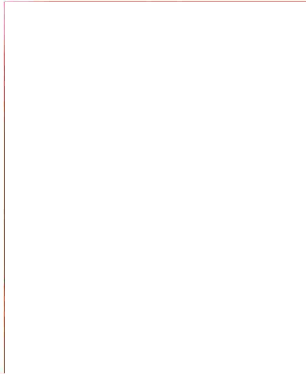
The Wheelock Exceder Series of notification appliances feature a sleek modern design that will please building owners with reduced total cost of ownership. Installers will benefit from its comprehensive feature list, including the most candela options in one appliance, low current draw, no tools needed for setting changes, voltage test points, 12/24 VDC operation, universal mounting base and multiple mounting options for both new and retrofit construction.

The Wheelock Exceder Series incorporates high reliability and high efficiency optics to minimize current draw allowing for a greater number of appliances on the notification appliance circuit. All strobe models feature an industry first of 8 candela settings on a single appliance. Models with an audible feature 3 sound settings (90, 95, 99 dB). All switches to change settings, can be set without the use of a tool and are located behind the appliance to prevent tampering. Wall models feature voltage test points to take readings with a voltage meter for troubleshooting and AHJ inspection.

The Wheelock Exceder Series of wall and ceiling notification appliances feature a Universal Mounting Base (UMB) designed to simplify the installation and testing of horns, strobes, and combination horn strobes. The separate universal mounting base can be pre-wired to allow full testing of circuit wiring before the appliance is installed and the surface is finished. It comes complete with a Contact Cover for protection against dirt, dust, paint and damage to the contacts. The Contact Cover also acts as a shunting device to allow pre-wire testing for common wiring issues. The Contact Cover is polarized to prevent it from being installed incorrectly and prevents the appliance from being installed while it is on the UMB. When the Contact Cover is removed the circuit will show an open until the appliance is installed. The UMB allows for consistent installation and easy replacement of appliances if required. Wall models provide an optional locking screw for extra secure installation, while the ceiling models provide a captivated screw to prevent the screw from falling during installation.

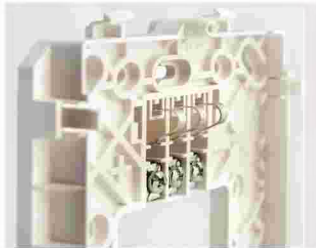
Features

- Sleek modern aesthetics
- Finger slide switches
- Voltage test points
- Multiple voltages
- 3 Audible settings
 - 90, 95, 99 dB
- Industry leading—8 candela settings on 1 device
 - Wall: 15/1575/30/75/95/110/135/185
 - Ceiling: 15/30/60/75/95/115/150/177

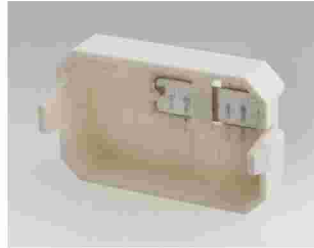


- Universal mounting base
 - Ceiling and wall
 - Mounts to 5 backbox types: 1 gang, 2 gang, 4" square, 3.5" octal. & 4" octal. (100mm for international customers)

Universal mounting base

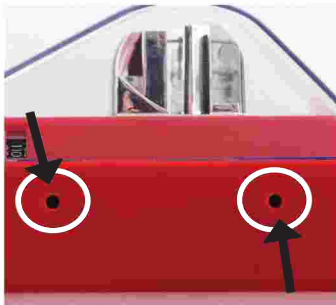


Contact cover



Common base for wall and ceiling with 5 mounting options

- Voltage test points for quick troubleshooting and easy spot checking (wall models only)



- Environmentally friendly
 - Low current draw
- Up to 9 models now in 1 appliance draw^①
- 12/24VDC on a single appliance
- Easy to remember model numbers

^① Patented

Note: Please read these specifications and associated installation instructions, before using, specifying, or installing this product. Visit Eaton.com/massnotification for current installation instructions.

General Notes

- Strobes are designed to flash at 1 flash per second minimum over their "Regulated Voltage Range"
- All candela ratings represent minimum effective strobe intensity based on UL Standard 1971.
- Series Exceder Strobe products are Listed under UL Standards 1971 and 464 for indoor use with a temperature range of 32°F to 120°F (0°C to 49°C) and maximum humidity of 93% (± 2%) UL 464 (85% UL 1971).
- Series Exceder horns are under UL Standard 464 for audible signal appliances (Indoor use only).

Compatibility and requirements

- Synchronize using the Wheelock® Sync Modules or panels with built-in Wheelock® Patented Sync Protocol
- Compatible with UL "Regulated Voltage" using filtered VDC or unfiltered VRMS input voltage
- Strobes produce 1 flash per second over the "Regulated Voltage" range

Compliance

- UL 1971, UL 464, ULC, CSFM, FM
- ADA/NFPA/ANSI/OSHA
- RoHS

Table 1. Strobe Ratings per UL Standard 1971

Model	Regulated Voltage Range VDC	UL Max Current ^①													
		24 VDC / 24 FWR												12 VDC	
		15	15/75	30	60	75	95	110	115	135	150	177	185	15	15/75
ST	8.0-33.0	0.057	0.070	0.085	—	0.135	0.163	0.182	—	0.205	—	—	0.253	0.110	0.140
STC	8.0-33.0	0.061	—	0.085	0.103	0.135	0.163	—	0.182	—	0.205	0.253	—	0.110	—

Table 2. Horn Strobe Ratings per UL 1971 & Anechoic at 24 VDC

Model	Regulated Voltage Range VDC	UL Max Current ^① at Anechoic 99 dBA													
		24 VDC												12 VDC	
		15	15/75	30	60	75	95	110	115	135	150	177	185	15	15/75
HS	8.0-33.0	0.082	0.095	0.102	—	0.148	0.176	0.197	—	0.242	—	—	0.282	0.125	0.159
HSC	8.0-33.0	0.082	—	0.102	0.141	0.148	0.176	—	0.197	—	0.242	0.282	—	0.125	—

Model	Regulated Voltage Range VDC	UL Max Current ^① at Anechoic 95 dBA													
		24 VDC												12 VDC	
		15	15/75	30	60	75	95	110	115	135	150	177	185	15	15/75
HS	8.0-33.0	0.073	0.083	0.087	—	0.139	0.163	0.186	—	0.230	—	—	0.282	0.122	0.153
HSC	8.0-33.0	0.073	—	0.087	0.128	0.139	0.163	—	0.186	—	0.230	0.272	—	0.122	—

Model	Regulated Voltage Range VDC	UL Max Current ^① at Anechoic 90 dBA													
		24 VDC												12 VDC	
		15	15/75	30	60	75	95	110	115	135	150	177	185	15	15/75
HS	8.0-33.0	0.065	0.075	0.084	—	0.136	0.157	0.184	—	0.226	—	—	0.267	0.120	0.148
HSC	8.0-33.0	0.065	—	0.084	0.120	0.136	0.157	—	0.184	—	0.226	0.267	—	0.120	—

① UL max current rating is the maximum RMS current within the listed voltage range (16-33 VDC for 24 VDC units). For strobes the UL max current is usually at the minimum listed voltage (16 VDC for 24 VDC units). For audibles the max current is usually at the maximum listed voltage (33 VDC for 24 VDC units). For unfiltered ratings, see installation instructions.

Table 3. Horn Ratings per UL Anechoic

Model	Regulated Voltage Range VDC	99 dB	95 dB	90 dB
HN	16-33.0	0.064	0.044	0.022
HNC	16-33.0	0.084	0.044	0.022
HN	8.0-17.5	0.047	0.026	0.017
HNC	8.0-17.5	0.047	0.026	0.017

Table 4. Specification & Ordering Information

Model	Strobe Candela	Sync w/ Wheelock Power Supplies	12/24 VDC ^①	Mounting Options
Horn Strobes				
HSR	15/1575/30/75/95/110/135/185	X	X	UMB ^②
HSW	15/1575/30/75/95/110/135/185	X	X	UMB ^②
HSRC	15/30/60/75/95/115/150/177	X	X	UMB ^②
HSWC	15/30/60/75/95/115/150/177	X	X	UMB ^②
Strobes				
STR	15/1575/30/75/95/110/135/185	X	X	UMB ^②
STW	15/1575/30/75/95/110/135/185	X	X	UMB ^②
STRC	15/30/60/75/95/115/150/177	X	X	UMB ^②
STWC	15/30/60/75/95/115/150/177	X	X	UMB ^②
Horn				
HNR		X	X	UMB ^②
HNW		X	X	UMB ^②
HNRC		X	X	UMB ^②
HNWC		X	X	UMB ^②

① 12 VDC models feature 15 & 15/75 settings

② UMB = Universal Mounting Base

Model Legend

HN	= Horn	R	= Red
ST	= Strobe	A	= Agent Lettering (strobes only)
HS	= Horn Strobe	AL	= Alert Lettering (strobes only)
C	= Ceiling Mount	N	= No Lettering (strobes only)
W	= White		

Example 1: STRC = Strobe, Red, Ceiling Mount
 Example 2: HSR = Horn Strobe, Red, Wall Mount
 Example 3: HSW = Horn Strobe, White, Wall Mount
 Example 4: STW-AL = Strobe, White, Wall Mount, Alert Lettering



Example: HSR



Example: HSWC

Architects and Engineers Specifications

The notification appliances shall be Wheelock Exceder Series HS Audible Strobe appliances, Series ST Visual Strobe appliances and Series HN Audible appliances or approved equals. The Series HS and ST Strobes shall be listed for UL Standard 1971 (Emergency Devices for the Hearing-Impaired) for Indoor Fire Protection Service. The Series HS and HN Audibles shall be UL Listed under Standard 464 (Fire Protective Signaling). All Series shall meet the requirements of FCC Part 15 Class B. All inputs shall be compatible with standard reverse polarity supervision of circuit wiring by a Fire Alarm Control Panel (FACP) with the ability to operate from 8 to 33 VDC. Indoor wall models shall incorporate voltage test points for easy voltage inspection.

The Series HS Audible Strobe and ST Strobe appliances shall produce a flash rate of one (1) flash per second over the Regulated Voltage Range and shall incorporate a Xenon flashtube enclosed in a rugged Lexan® lens. The Series shall be of low current design. Where multi-candela appliances are specified, the strobe intensity shall have 8 field selectable settings at 15, 15/75, 30, 75, 95, 110, 135, 185 candela for wall mount and 15, 30, 60, 75, 95, 115, 150, 177 candela for ceiling mount. The selector switch for selecting the candela shall be tamper resistant. The 15/75 candela strobe shall be specified when 15 candela UL Standard 1971 Listing with 75 candela on-axis is required (e.g., ADA compliance). Appliances with candela settings shall show the candela selection in a visible location at all times when installed.

The audible shall have a minimum of three (3) field selectable settings for dBA levels and shall have a choice of continuous or temporal (Code 3) audible outputs.

The Series HS Audible Strobe, ST Strobe and Series HN Audible shall incorporate a patented Universal Mounting Base that shall allow mounting to a single-gang, double-gang, 4-inch square, 3.5-inch octal, 4-inch octal or 100mm European type back boxes. Two wire appliance wiring shall be capable of directly connecting to the mounting base. Continuity checking of the entire NAC circuit prior to attaching any notification appliances shall be allowed. Product shall come with Contact Cover to protect contact springs. Removal of an appliance shall result in a supervision fault condition by the Fire Alarm Control Panel (FACP). The mounting base shall be the same base among all horn, strobe, horn strobe, wall and ceiling models. All notification appliances shall be backwards compatible.

The Series HS and ST wall models shall have a low profile measuring 5.24" H x 4.58" W x 2.19" D. Series HN wall shall measure 5.24" H x 4.58" W x 1.6" D. The Series HSC and STC shall be round and have a low profile with a diameter of 6.68" x 2.63" D. Series HNC ceiling shall have a diameter of 6.68" x 1.50" D.

When synchronization is required, the appliance shall be compatible with Wheelock's DSM Sync Modules, Wheelock Power Supplies or other manufacturer's panels with built-in Wheelock Patented Sync Protocol. The strobes shall not drift out of synchronization at any time during operation. If the sync protocol fails to operate, the strobe shall revert to a non-synchronized flash-rate and still maintain (1) flash per second over its Regulated Voltage Range. The appliance shall also be designed so that the audible signal may be silenced while maintaining strobe activation when used with Wheelock synchronization protocol.

Wall Appliances: UL Standard 1971, UL Standard 464, California State Fire Marshal (CSFM), ULC, FM, RoHS

Ceiling Appliances: UL Standard 1971, UL Standard 464, California State Fire Marshal (CSFM), ULC, FM, RoHS

Note: Due to continuous development of our products, specifications and offerings are subject to change without notice in accordance with Cooper Wheelock Inc., dba Eaton standard terms and conditions.



WE ENCOURAGE AND SUPPORT NICET CERTIFICATION
 3 YEAR WARRANTY

Eaton
 1000 Eaton Boulevard
 Cleveland, OH 44122
 United States
 Eaton.com

Eaton
 Life safety & mass notification solutions
 273 Branchport Ave.
 Long Branch, NJ 07740
 Eaton.com/massnotification

© 2016 Eaton
 All Rights Reserved
 Printed in USA
 Publication No. TD450049EN
 November 2016

Eaton is a registered trademark.

All other trademarks are property of their respective owners.





**CALIFORNIA DEPARTMENT OF FORESTRY & FIRE PROTECTION
OFFICE OF THE STATE FIRE MARSHAL
FIRE ENGINEERING & INVESTIGATIONS DIVISION
BUILDING MATERIALS LISTING PROGRAM**

LISTING SERVICE

LISTING No.:	7125-0785:0168
CATEGORY:	7125 - FIRE ALARM DEVICES FOR THE HEARING IMPAIRED
LISTEE:	Cooper Wheelock Inc. 7246 16th St. E., Ste. 105, Sarasota, FL, 34243 Contact: Newsome, Leon 941-487-2331 Email: LeonJNewsome@Eaton.com
DESIGN:	Exceder Series: Models ST strobe, HS horn strobe and HN horn. Model ST is a synchronous and non-synchronous strobe light. Model HS a visual/audible appliance and Model HN is an audible signal appliance. All units followed by R (red) or W (white). Additionally, a ' C ' may be added for ceiling models and/or a '-NR' may be added for non-resettable models. For non -NR models and optional 'S' for silver fascia may be added*. Refer to listee's data sheet for additional detailed product description and operational considerations.
RATING:	Electrical: 12 VDC/24VDC/FWR Candela (wall)*: 15, 15/75, 30, 75, 95, 110, 135 & 185 Candela (ceiling)*: 15, 30, 60, 75, 95, 115, 150, & 177
INSTALLATION:	In accordance with listee's printed installation instructions, applicable codes and ordinances and in a manner acceptable to the authority having jurisdiction. All models are for indoor use and for wall mount only or ceiling mount only*
MARKING:	Listee's name, model number, electrical/candela rating, and UL label.
APPROVAL:	Listed as horn for fire alarm signaling and strobe, horn/strobe for the hearing impaired when used with separately listed electrically compatible fire alarm control units. Refer to listee's Installation Instructions Manual for details.
NOTES:	

*Rev. 9-24-09 fm



**CALIFORNIA DEPARTMENT OF FORESTRY & FIRE PROTECTION
OFFICE OF THE STATE FIRE MARSHAL
FIRE ENGINEERING & INVESTIGATIONS DIVISION
BUILDING MATERIALS LISTING PROGRAM**

LISTING SERVICE



This listing is based upon technical data submitted by the applicant. OSFM Fire Engineering staff has reviewed the test results and/or other data but does not make an independent verification of any claims. This listing is not an endorsement or recommendation of the item listed. This listing should not be used to verify correct operational requirements or installation criteria. Refer to listee's data sheet, installation instructions and/or other suitable information sources.

Date Issued: 05/03/2024

Listing Expires: 06/30/2025

Authorized By: **David Castillo**, Program Coordinator
Fire Engineering & Investigations Division

FM Series

Electromagnetic Door Holders



Miscellaneous

General

FM Series electromagnetic door holders are designed for virtually any remote door release application. They are primarily used to hold fire and smoke barrier doors open until released by a remote smoke detector or other switching device. The complete assembly consists of: an armature contact plate with adjustable pivot mounting for installation in the door, and a heavy-duty electromagnet, in a durable plastic enclosure, mounted on the wall or floor behind the door. A separate closing device is required.

Features

- All models support 12 VDC, 24 VAC/VDC, or 120 VAC.
- Improperly applied voltage does not damage the unit.
- Spacing kit for odd angles.
- 25 to 40 pounds (11.3 kg) holding power.
- Magnet protected against transients and surges up to 600 volts (AC models).
- Fail-safe operation; power failure releases door to close.
- Positive release button initiates closing motion.
- Two-year warranty.
- Floor- and wall-mount models.

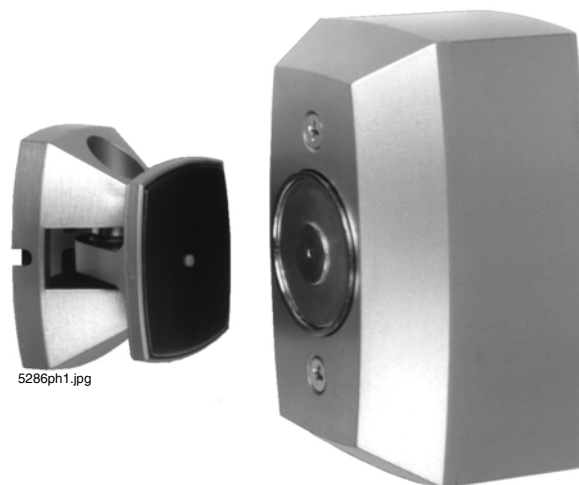
Installation

- Used in hospitals, schools, offices, nursing homes, and public buildings.
- Install where required by code, where doors may be used to confine smoke or fire, or wherever remote control or automatic closing doors are required.
- Ensure that door hardware and trim projections are compatible with total projection of door release.
- Anchor the electromagnet firmly, as the wall portion will function as a doorstop.
- Locate magnet approximately 6" (15.24 cm) in from the lock stile at the door. Wall magnets should be mounted approximately two to four feet (0.61 to 1.22 meters) above the floor for optimum performance.
- Door-mounted contact plate includes hardware for thru-bolting or concealed mounting.
- Spotting template included with unit assures correct alignment.
- 14 AWG (2.0 mm²) maximum wire size.

Agency Listings and Approvals

These listings and approvals apply to the modules specified in this document. In some cases, certain modules or applications may not be listed by certain approval agencies, or listing may be in process. Consult factory for latest listing status.

- **UL/ULC Listed:** R4869
- **MEA Listed:** 447-00-E
- **CSFM:** 3550-0028:210



FM996

Ordering Information

FM980: Surface floor-mount model for single door; 12 VDC, 24 VAC/VDC, 120 VAC.

FM996: Surface wall-mount model; 12 VDC, 24 VAC/VDC, 120 VAC.

FM998: Flush wall-mount model; 12 VDC, 24 VAC/VDC, 120 VAC.

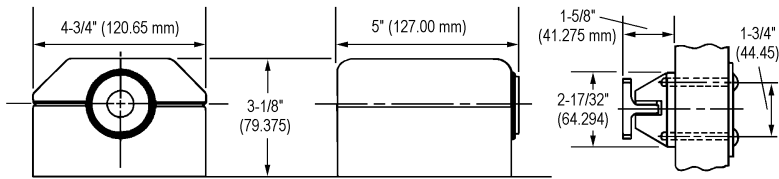
FM900: Extension kit.

FM900-Z: Extension kit, 90°.

FM900-50: Spacer, 1/2" (1.27 cm).

FM900-75: Spacer, 3/4" (1.905 cm).

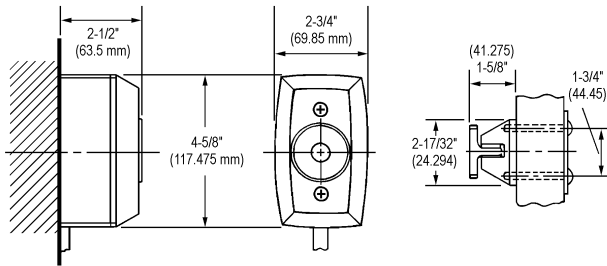
FM900-100: Spacer, 1" (2.54 cm).



5286m980.tif

Model 980
Floor-Mount
Single Door

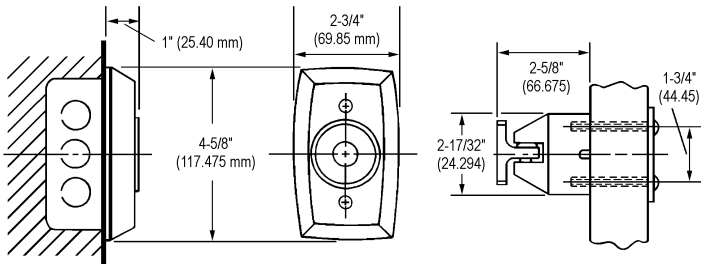
- Concealed wiring.
- Total floor space required: 6-5/8" (168 mm).
- Mounting requirements: Conduit connects directly to floor plate.
- UL-Listed door holder.
- Voltage/current:
 - 120 VAC, 60 Hz, 0.020 amp.
 - 24 VAC/VDC, 60 Hz, 0.020 amp.
 - 12 VDC, 0.040 amp.
- Shipping weight: 4 lbs. (1.8 kg).



5286m996.tif

Model 996
Wall Mount
Surface Wiring

- Total projection: 4-1/8" (105 mm).
- Mounting requirements: 1-1/2" (38 mm) deep adapter housing.
- UL-Listed door holder.
- Shipping weight: 3 lbs. (1.4 kg).
- Voltage/Current:
 - 120 VAC, 60 Hz, 0.020 amp.
 - 24 VAC/VDC, 60 Hz, 0.020 amp.
 - 12 VDC, 0.040 amp.



5286m998.tif

Model 998
Wall-Mount
Standard Doors
Concealed Wiring

- Total projection: 3-5/8" (92 mm).
- Mounting requirements: 2" x 4" x 1-3/4" (51 x 102 x 45 mm) outlet box.
- Wall must be properly reinforced and outlet box adequately fastened.
- UL-Listed door holder.
- Voltage/current:
 - 120 VAC, 60 Hz, 0.020 amp.
 - 24 VAC/VDC, 60 Hz, 0.020 amp.**
 - 12 VDC, 0.040 amp.
- Shipping weight: 2-1/2 lbs. (1.1 kg).

©2010 by Honeywell International Inc. All rights reserved. Unauthorized use of this document is strictly prohibited.



This document is not intended to be used for installation purposes.
 We try to keep our product information up-to-date and accurate.
 We cannot cover all specific applications or anticipate all requirements.
 All specifications are subject to change without notice.



For more information, contact Notifier. Phone: (203) 484-7161, FAX: (203) 484-7118.
www.notifier.com



**CALIFORNIA DEPARTMENT OF FORESTRY & FIRE PROTECTION
OFFICE OF THE STATE FIRE MARSHAL
FIRE ENGINEERING & INVESTIGATIONS DIVISION
BUILDING MATERIALS LISTING PROGRAM**

LISTING SERVICE

LISTING No.:	3550-0028:0210
PARENT LISTING No.:	3550-0047:0001
CATEGORY:	3550 - DOOR CLOSER/HOLDERS/RELEASING DEVICES
LISTEE:	Notifier One Fire-Lite Place, Northford, CT, 06472 Contact: Brant, Lisa 2034846105 Email: lisa.brant@honeywell.com
DESIGN:	Models FM980, FM996, and FM998 electromagnetic door holders. Refer to listee's data sheets for detailed product description and operational considerations.
RATING:	
INSTALLATION:	In accordance with listee's printed installation instructions, applicable codes and ordinances and in a manner acceptable to the authority having jurisdiction.
MARKING:	Listee's name, model number, electrical rating and UL label.
APPROVAL:	Listed as an electromagnetic door holder for use on fire-rated doors when installed in conjunction with separately listed smoke detection devices approved for releasing device service
NOTES:	



This listing is based upon technical data submitted by the applicant. OSFM Fire Engineering staff has reviewed the test results and/or other data but does not make an independent verification of any claims. This listing is not an endorsement or recommendation of the item listed. This listing should not be used to verify correct operational requirements or installation criteria. Refer to listee's data sheet, installation instructions and/or other suitable information sources.

Date Issued: 05/02/2024

Listing Expires: 06/30/2025

Authorized By: **David Castillo**, Program Coordinator
Fire Engineering & Investigations Division

HPF-PS SERIES

6 Amp and 10 Amp, 24 Volt Power Supplies

The HPF-PS Series are independently configurable power supplies, allowing you to pair any input with any output, and feature LED diagnostics for troubleshooting.

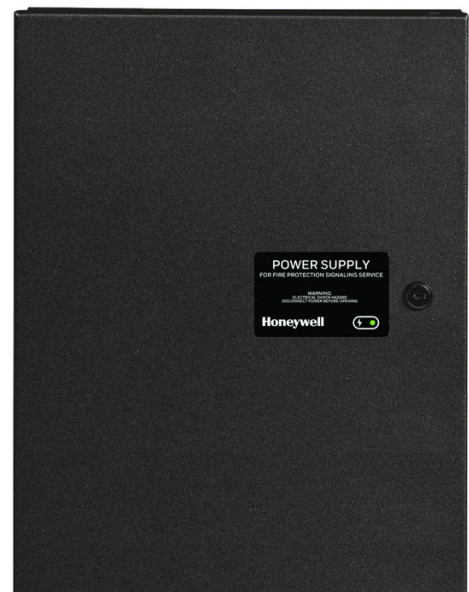
The HPF-PS Series is a remote power supply line from Honeywell and is a direct replacement for the 5495/5499. The HPF-PS6(B) is a 6 amp and the HPF-PS10(B) is a 10 amp, remote power supplies with battery charger that may be connected to any 12 or 24 volt fire alarm control panel (FACP) or used as a standalone power supply. The HPF-PS Series provides 24 VDC power for NACs (notification appliance circuits) configured as either Class B or Class A (requires the ZNAC-PS option card) with multiple sync protocol options. The HPF-PS Series also provides auxiliary power, constant or resettable, suited for detectors, annunciators, door holders, and other fire alarm system peripherals. The HPF-PS Series cabinet can hold two 7 AH or 18 AH batteries and can charge up to 33 AH batteries in a separate cabinet.

FEATURES AND BENEFITS

- Up to five (6 amp model) or seven (10 amp model) independently-configurable, power-limited output circuits for:
 - Class B and/or Class A NACs
 - Class B and/or Class A resettable or non-resettable 24V auxiliary power
 - door holder power
- Converts from Class B to Class A wiring without losing any outputs using the ZNAC-PS converter card (sold separately)
- Optimal for powering four-wire smoke detectors, annunciators, and other system peripherals requiring regulated power
- Optional addressable control, monitor, and relay modules and power-supervision relay (EOLR-1)
- Configurable for ANSI® Temporal 3 or Temporal 4 coded output
- UL-Listed NAC synchronization using System Sensor®, Wheelock®, Gentex®, or AMSECO® appliances
- Synchronization can be triggered from FACP NAC/remote sync outputs, cascaded power supply, or a control module, single or multi, which may be housed within the power supply cabinet
- Ability to cascade up to four power supplies
- Two (6 amp model) or three (10 amp model) fully-isolated input/control circuits which can be programmed to any output
- Two Form C normally-closed trouble relays for AC Trouble and General Trouble
- 6 or 10 amp full load output, respectively, with 3 A maximum/circuit
- Individual NAC power and trouble LEDs for diagnostic efficiency
- Trouble history mode for diagnostic support
- Wide range end-of-line supervision value (normal: 2-27K ohms)
- Selectable earth fault detection (enable or disable)
- AC trouble report delay timer
- Completely configurable via onboard DIP switches, no extra software required
- Self-contained in compact, locking cabinet constructed of heavy gauge steel with a corrosion-resistant powder coat chip and scratch-resistant finish
- Cabinet designed with ten double knockouts and a removable door for ease of installation and wiring
- Includes integral battery charger capable of charging up to 33 AH batteries
- Cabinet can house two 7 AH or 18 AH batteries
- Battery charger may be disabled via DIP switch for applications requiring larger batteries and external battery charger
- Removable terminal blocks accommodate up to 12 AWG (3.1mm²) wire
- Works with any UL 864 FACP which utilizes an industry-standard reverse-polarity notification circuit



HPF-PS6/HPF-PS10



HPF-PS6B/HPF-PS10B

Honeywell

Farenhyt Series

ORDERING INFORMATION

HPF-PS6: 6.0 A, 120 VAC remote charger power supply in a lockable, metal enclosure, red

HPF-PS6B: 6.0 A, 120 VAC remote charger power supply in a lockable, metal enclosure, black

HPF-PS10: 10.0 A, 120 VAC remote charger power supply in a lockable, metal enclosure, red

HPF-PS10B: 10.0 A, 120 VAC remote charger power supply in a lockable, metal enclosure, black

ZNAC-PS: Optional Class A converter card, sold separately

50152254-001: Hardware kit for Canadian applications

17071: Alternate Silent Knight lock set

001347-L8: Alternate Silent Knight key

SK-CONTROL, IDP-CONTROL: Addressable Control Module for one Class B or Class A zone of supervised, polarized Notification Appliances. Notification Appliance Circuit option requires external 24 VDC to power notification appliances.

SK-RELAY, IDP-RELAY: Addressable relay module containing two isolated sets of Form-C contacts, which operate as a DPDT switch

SK-MONITOR, IDP-MONITOR: Addressable Monitor Module for one zone of normally open dry-contact initiating devices. Includes plastic cover plate and end-of-line resistor. Module may be configured for either a Class B or Class A

SK-MONITOR-2, IDP-MONITOR-2: Dual Monitor Module. Same as SK-MONITOR, IDP-MONITOR except it provides two inputs for Class B wiring only

SK-RELAYMON-2, IDP-RELAYMON-2: Provides two monitored inputs and two Form-C relays. Functions in Class B wiring only

SK-CONTROL-6, IDP-CONTROL-6: Six-circuit supervised control module

SK-RELAY-6, IDP-RELAY-6: Six Form-C relay control module

EOLR-1: 12/24 VDC end-of-line relay for monitoring four-wire smoke detector power

BAT-1270-BP: Battery, 12 volt, 7.0 AH, 5-pack (two required)

BAT-12180-BP: Battery, 12 volt, 18AH, 2-pack

BAT-12330: Battery, 12 volt, 33AH

SEISKIT-MULTI-1: Seismic kit for the HPF-PS Series. Includes bracket and hardware for two 7AH or two 18AH batteries.

HPF-PS SERIES TECHNICAL SPECIFICATIONS

PRIMARY (AC) POWER

HPF-PS6(B): 120 VAC, 50/60 Hz, 5.0A maximum

HPF-PS10(B): 120VAC, 50/60 Hz, 6.2 A maximum

Wire Size: #12-14 AWG with 600 V insulation

COMMAND INPUT CIRCUIT

Trigger Input Voltage: 9 to 32 VDC

Trigger Current: 2.0 mA (16 - 32 V); Per Input: 1.0 mA (9 - 16 V)

RELAY CIRCUITS

Trouble Contact Rating: 4 A at 24 VDC

OUTPUT CIRCUITS

- 24 VDC filtered
- HPF-PS6(B): TB8-TB9 – 1A Regulated, 3A special applications; TB10-TB12 – 0.3A Regulated, 3A special applications
- HPF-PS10(B): TB8-TB11 – 1.5A Regulated, 3A special applications; TB12-TB14 – 0.3A Regulated, 3A special applications
- 6.0 A (HPF-PS6(B)) or 10.0 (HPF-PS10(B)) maximum total continuous current for all outputs

SECONDARY POWER (BATTERY) CHARGING CIRCUIT

- Supports lead-acid batteries only
- Float-charge voltage: 27.6 VDC
- Maximum current charge: 1.5 A
- Maximum battery capacity: 18 AH (inside cabinet)
- Maximum battery charging capacity: 33 AH (external cabinet)

PHYSICAL

Dimensions: 20.0"H x 14.5"W x 3.5"D (cm: 50.8H x 36.83W x 8.9D)

Weight: with two 7Ah batteries is 24 pounds (10.9 kg), with two 18 AH batteries is 39 pounds (17.7 kg)

STANDARDS AND CODES

The HPF-PS complies with the following standards:

NFPA 72: National Fire Alarm Code

UL 864: Standard for Control Units for Fire Alarm Systems (NAC expander mode)

UL 1481: Power Supplies for Fire Alarm Systems

AGENCY LISTINGS AND APPROVALS

These listings and approvals apply to the modules specified in this document. In some cases, certain modules or applications may not be listed by certain approval agencies, or listing may be in process. Consult factory for latest listing status.

UL Listed: S24562 (HPF-PS Series), S3511 (SK-PS Series, discontinued)

CSFM: 7315-1637:0505 (HPF-PS Series), 7315-0559:0522 (SK-PS Series, discontinued)

FDNY COA:
2022-TMCOAP-002231-AMND (HPF-PS Series),
2021-TMCOAP-009629-AMND (SK-PS, discontinued)

FM Approved

Farenhyt™ is a trademark of Honeywell International, Inc. Wheelock® is a registered trademark of Cooper Technologies Company. Gentex® is a registered trademark of Gentex Corporation. AMSECO® is a registered trademark of Potter Electric Signal Company, LLC. ANSI® is a registered trademark of the American National Standards Institute, Inc.

©2023 by Honeywell International Inc. All rights reserved. Unauthorized use of this document is strictly prohibited.

This document is not intended to be used for installation purposes. We try to keep our product information up-to-date and accurate. We cannot cover all specific applications or anticipate all requirements. All specifications are subject to change without notice.

Country of origin: USA

Honeywell Fire Solutions

12 Clintonville Road
Northford, CT 06472-1610
203.484.7161
www.farenhyt.com

FH-62003 | D | 08-23
©2023 Honeywell International Inc.

THE
FUTURE
IS
WHAT
WE
MAKE IT

Honeywell



**CALIFORNIA DEPARTMENT OF FORESTRY & FIRE PROTECTION
OFFICE OF THE STATE FIRE MARSHAL
FIRE ENGINEERING & INVESTIGATIONS DIVISION
BUILDING MATERIALS LISTING PROGRAM**

LISTING SERVICE

LISTING No.:	7315-1637:0505
PARENT LISTING No.:	7315-0028:0513
CATEGORY:	7315 - POWER UNITS
LISTEE:	Honeywell International Inc. One Fire-Lite Place, Northford, CT, 06472 Contact: Brant, Lisa 2034846105 Email: lisa.brant@honeywell.com
DESIGN:	<p>Models HPF-PS6, HPF-PS6B, HPF-PS6E, HPF-PS10, HPF-PS10B, and HPF-PS10E Power Supply Expander. Model ZNAC-PS Class A Converter Module.</p> <p>Model Variations: All HPF-PS6 Models: Maximum 6A Capacity; 5 Class B NAC's; 2 Command Inputs; Trouble and AC Loss Relays</p> <p>All HPF-PS10 Models: Maximum 10A Capacity; 7 Class B NAC's; 3 Command Inputs; Trouble and AC Loss Relays</p> <p>With Suffix "E": Nominal 240V, 50/60 Hz AC Input</p> <p>Without Suffix "E": Nominal 120V, 50/60 Hz AC Input</p> <p>Models HPF-PS6 and HPF-PS10: Red Enclosure</p> <p>Models HPF-PS6B, HPF-PS6E, HPF-PS10B, and HPF-PS10E: Black Enclosure</p> <p>Model ZNAC-PS: Optional Class A Conversion Module</p> <p>Refer to listee's printed data sheet for detailed product description and operational considerations.</p>
RATING:	<p>Models HPF-PS6 and HPF-PS6B: 120V AC, 50/60 Hz, 5.0A Maximum</p> <p>Model HPF-PS6E: 240V AC, 50/60 Hz, 2.7A Maximum</p> <p>Models HPF-PS10 and HPF-PS10B: 120V AC, 50/60 Hz, 6.2A Maximum</p> <p>Model HPF-PS10E: 240V AC, 50/60 Hz, 3.5A Maximum</p> <p>Model ZNAC-PS: 24V DC</p>



**CALIFORNIA DEPARTMENT OF FORESTRY & FIRE PROTECTION
OFFICE OF THE STATE FIRE MARSHAL
FIRE ENGINEERING & INVESTIGATIONS DIVISION
BUILDING MATERIALS LISTING PROGRAM**

LISTING SERVICE

INSTALLATION:	In accordance with listee's printed installation instructions, applicable codes and ordinances, and in a manner acceptable to the authority having jurisdiction.
MARKING:	Listee's name, model number, electrical rating, and UL label.
APPROVAL:	Listed as a power supply extender when used with separately listed compatible fire alarm control units. Refer to listee's Installation Instruction Manual for details.
NOTES:	

10-08-20 VWW



This listing is based upon technical data submitted by the applicant. OSFM Fire Engineering staff has reviewed the test results and/or other data but does not make an independent verification of any claims. This listing is not an endorsement or recommendation of the item listed. This listing should not be used to verify correct operational requirements or installation criteria. Refer to listee's data sheet, installation instructions and/or other suitable information sources.

Date Issued: 05/08/2024

Listing Expires: 06/30/2025

Authorized By: **David Castillo** , Program Coordinator
Fire Engineering & Investigations Division