



Glazing Addendum 2
Bid Packages - 11.0, Interior Glazing

No 9557460
UCD Medical Campus Operating Modernization

This addendum to the RFP documents consists of pages AD-1 thru AD-12.

The following changes, additions, or deletions shall be made to the listed documents as indicated, and all other conditions shall remain the same.

The following is a response to support interior glazing assumptions, please review all responses and documents attached to incorporate accurate pricing.

1. Stanley doors required for this project are attached below. Assume the installation of PACU doors to be Manually operated and OR specialty sliding doors to be automatically operated. We understand there is difficulty receiving information from Stanley at this time, please refer to updated scope of work included below and provide pricing in accordance to the details provided.
 - a. PACU = 8300
 - b. Pump Rooms = 8500A

PART 2 - PRODUCTS

2.1 ICU/CCU ENTRANCES

- A. Manufacturer: Stanley Access Technologies (www.stanleyaccess.com);
 1. ProCare™ 8300 Series sliding ICU/CCU entrances.
 2. ProCare™ 8500A Series sliding ICU/CCU entrances.
 3. Contact: Stanley Access Technologies; Attn: Will Papania; Phone: 707-294-2913, Fax: 800-737-0816, Email: William.Papania@allegion.com.

2. A revised door schedule has been included below. Attached document to be reviewed and incorporated into pricing.

The bid due date remains the same on Wednesday, March 26, 2025 at 2 PM.

Thank you,

Lauren Morgan
Preconstruction Manager – Swinerton
15 Business Park Way, Ste 101
Sacramento, CA 95828
C. 916-208-3390
Lauren.morgan@swinerton.com

**SCOPE OF WORK
AND PROJECT SPECIFIC CONDITIONS
INTERIOR GLAZING, ALUMINUM FRAMES, SLIDING AUTOMATIC DOORS AND HARDWARE,
AND INTERIOR STOREFRONTS**

03/1/2025

- I. This attachment defines the scope of work specific to Subcontractor. This Attachment shall not limit more stringent requirements found elsewhere in the Contract Documents unless specifically listed as an exclusion below.
- II. This attachment defines the scope of work specific to Subcontractor. This Attachment shall not limit more stringent requirements found elsewhere in the Contract Documents unless specifically listed as an exclusion below. See accompanying PUBLIC BID DOCUMENTS, PROJECT DOCUMENTS AND PROJECT SPECIFIC PROCEDURES & CONDITIONS for additional subcontracting requirements, applicable contract documents, and project specific procedures.

III. Scope of Work:

A. General Trade Scope, including but not limited to the following:

1. Furnish and install all labor, material and equipment to complete **Glass and Glazing Scope (Interior Glazing, Aluminum Frames, Door Hardware, Sliding Automatic Entrances, & Storefronts)** work as described in and shown on the contract documents, and in conjunction with this Scope of Work Document. Complete work that is currently shown, and that which can be reasonably anticipated to be included for this project. No exclusion or limitation in the plans and specifications shall be reason for omitting the appurtenances or accessories necessary to complete this work.
2. The drawings are scope documents that indicate the general scope of the project and as such, the drawings and specifications do not necessarily indicate or describe all work required for the full performance and completion of the work. Subcontract is awarded on the basis of such documents with the understanding that the Subcontractor is to furnish and install all items required for the proper completion of their work without adjustment to the subcontract price, including but not limited to the following: Subcontractor shall furnish all labor, supervision, material, equipment, tools, lifts, layout, storage, loading and unloading, flagmen, taxes, insurance, support, material and labor escalation, overhead, profit, and all other miscellaneous appurtenances as necessary for a complete and functional installation as described in the Contract Documents.
3. The costs of revisions made by Subcontractor, resulting from the use of a substitution (or use of an approved alternate) which differs from the Specified Basis of Design or the Basis of Design implemented in the Project Contract Drawings, will be borne by Subcontractor, including any delay costs.
4. Subcontractor shall provide field and office supervision sufficient for the proper and timely execution and management of the work in accordance with the project schedule and other contract requirements. No changes in supervision shall be allowed without written authorization from Contractor unless caused by a termination or serious illness. Contractor shall have the right to reject any proposed Subcontractor personnel without cause.
5. Subcontractor shall have a foreman on site at all times during the execution of the work covered in this contract. This individual shall be responsible for all aspects of this work and be able to represent the Subcontractor in all matters involving the subcontract including detailing, scheduling, coordination, change orders and safety. The Foreman shall also be present at weekly coordination meetings beginning at least two weeks in advance of the scheduled start of the work.
6. Provide all required submittals for review and approval by Swinerton and Design Team.

-
7. Work to be performed during normal working hours, unless otherwise directed by Swinerton.
 8. Coordinate with other trade subcontractors whose work interfaces with your work to determine required installation tolerances (framing, electrical, flooring, low voltage, security, fire alarm, etc.).
 9. All finished products to be turned-over without scratches, smudges, markings, or stains. Leave work clean of all fabrication and installation materials including adhesives. Wipe clean all work as required to perform punchlist.
 10. Comply with all applicable codes and jurisdictional requirements.
 11. Subcontractor is solely responsible for the dimensional correctness of their work.
 12. Any dented, scratched, nicked, or otherwise damaged material (not resulting from other trades) will be rejected and replaced at no additional charge and without delay to the project. Any damage resulting from other trades will be replaced on a time and material basis.
 13. Prior to installation, store materials in the area of installation for as long as required by the specifications and/or manufacturer to achieve temperature stability and acclimatization.
 14. Provide complete warrantable systems including all components, details, and accessories recommended by the product manufacturer. Prepare and submit maintenance manuals and material warranties. Warranty periods will commence when the project's Substantial Completion has been obtained.
 15. Mock-ups and samples as required.
 16. All layout for own work. Two pairs of control lines and an elevation benchmark will be provided on each floor by others.
 17. Subcontractor to provide all access for their own work (i.e. lifts, ladders, etc.)
 18. Subcontractor to provide all Hoisting for their own work including:
 - a. Operator, Rigging/Riggers & Flagmen
 - b. Cribbing at the crane travel area to protect AC paving and underground utilities.
 - c. Subcontractor is responsible for all crane insurance requirements during and after use including property damage insurance for the crane.
 19. Storefront system.
 20. Furnish and install tempered glass knock out decals on the appropriate windows.
 21. Remove all decals and protective spacers after installation.
 22. Graphics if required.
 23. Operators and controls as specified.
 24. Steel reinforcement within aluminum sections if/as required.
 25. The Subcontractor shall accept the tolerances specified in other specification sections that may affect its work including for all concrete, steel, and light-gauge framing work. This Subcontractor shall provide any additional shimming, furring, adjusting, leveling, clips, and/or attachments required to complete a plumb and level installation of the work of this scope.
 26. Coordination of design and testing with other related subcontractors to yield a complete system for testing and ultimate approval.
 27. Removal of any fireproofing required for installation and patching upon completion.
 28. Fabricated materials must be on site or stored locally one week prior to the schedule start date.
-

-
29. Furnish and install any floor boxes for doors, including grout. Furnish layout for any block-outs by others in a timely manner to meet project schedule.
 30. Furnish F.O.B. jobsite any concrete embeds necessary for anchorage or support work provided under this scope in accordance with project schedule. Verify layout for embedded items with related trades.
 31. If applicable - Coordinate location of all anchors with Contractor in order to avoid the slab post-tensioned tendons. Subcontractor will be responsible for all x-raying to locate tendons and/or costs associated with repair of post-tensioned tendons damaged as a result of their work.
 32. Provide electrified hardware as required including power booster/transformer.
 33. Provide spray paint cans for touch up of each color.
 34. Subcontractor to leave storefront system clean of all fabricating and erecting materials such as, but not limited to caulking and sealant so that final cleaning by Contractor is not impacted by unusual cleaning processes.
 35. Final field finishing and repair of factory applied finish to leave work in a "no punchlist condition".
 36. Comeback to adjust all doors, frames and hardware as required for final approval and again one year after acceptance.
 37. Comeback work at crane, personnel/material hoist, trash chute, etc., openings as required.
 38. Include all side-lites, windows and interior glass walls including aluminum frames, glass, gaskets, stops, etc.
 39. Wire and fire rated glass as required.
 40. Unframed mirrors, includes clips, adhesives, angles, etc. as required.
 41. Any costs associated with special accommodations for delivery, hoisting and installation of oversized items are to be paid by this Subcontractor.
 42. Accessories, sealants, stays, caulking, setting blocks, shims, gaskets, glass channels, tracks, aluminum caps, sheet metal flashings, closures, coping, trim, sill stools, angles, plate metal closures, clips, angles, support members, furring, brackets, seismic bracing, blocking, steel reinforcement, etc. as required for a complete installation. Provide a mockup of glass and glazing details, full scale if specified.
 43. Exposed fasteners are not permitted unless the Architect makes an exception.
 44. Provide glazing as required for out of level floor conditions within industry standards.
 45. Materials and assemblies provided must comply with all applicable codes and laws, including the American Disabilities Act and Title 24. Include cost for, and delineate in the submittals, any required deviations from the specified materials and assemblies in order to achieve compliance.
 46. The opening number on the drawings shall be the only number to be used on all door, frame and hardware schedules. Do not create a new numbering system. If there is no door number, utilize the number of the room that the door leads into.
 47. A milestone bar chart schedule illustrating the relationship of date of submittal, date required for approval, order date, projected shipping date, projected delivery date, and the date of installation indicated on Contractor's construction schedule, is to be provided within two (2) weeks of notice to proceed. This schedule is to be updated on the 20th of each month indicating confirmation dates as they become available, until all materials have been delivered. Include "worst case" scenarios for unconfirmed dates. An electronic copy of this schedule is to be provided in a format acceptable to Contractor.
-

-
48. Frame schedule updates: If and/or when an item is changed, added or deleted, the following method will be utilized for revisions to these schedules and bills of materials:
 - a. Deleted – Strike out the item being deleted. Do not remove the item from the schedule.
 - b. Changed – Strike out the item and/or data being replaced and insert the applicable information for the replacement (new) item. Do not remove the item from the schedule.
 - c. Added – Insert the applicable information for the new item.
 49. Always “cloud” the modifications and delineate the source of the change by using Contractor’s Reference Number (if one applies) and a Bulletin Number, Proposal Request, or Request for Information (if one applies).
 50. Provide a copy of the revised schedule sheet within ten (10) days of the initiation of the change, showing the re-issuance date on each schedule sheet. Maintain and re-issue with each revision the cover sheet and legend for each schedule (to track each re-issuance).
 51. Maintain a columnar inventory of all frames listing the following items. The inventory shall be maintained daily and submitted with each progress payment request, and as requested by Contractor. An electronic copy of this schedule is to be provided in a format acceptable to Contractor. Failure to provide accurate and up-to-date information may be cause to withhold progress payments. Information to be included but not limited to:
 - a. Total current job requirements.
 - b. Quantity received to date.
 - c. Balance to be received.
 52. Any damaged materials must be documented and reported to Contractor’s Superintendent as soon as it is discovered. Replacement materials to be ordered immediately.
 53. Materials deleted after order placement that cannot be restocked are to be delivered to the Owner as directed by Contractor.
 54. The warranty period will commence when the Certificate of Occupancy has been secured.
 55. Furnish copies of manufacturer’s order and shipping date confirmation upon request.
 56. Coordinate, with Installer for receipt and stocking of all deliveries. Deliveries should be scheduled for a minimum of one week prior to schedule installation date. Multiple deliveries will be required due to storage space constraints on site. Contractor will not sign for deliveries. Verify delivery tags and quantities with signatures. Any trucking/trucker stand by time and/or delivery charges shall be borne by Subcontractor if due to improper coordination with Installer. Installer shall verify inventory for each frame marked and control stocking of materials onsite.
 57. Permanent labels or markings in throat of each frame to identify corresponding opening number.
 58. Provide fire-rated aluminum frame assemblies with labels as shown or as required due to wall rating whichever is more stringent.
 59. Stock frames on dunnage to keep off slab. Protect stored frames with visqueen.
 60. Furnish frames to keep pace with wall progress. Installation of frames to be in sequence with construction schedule. Allow for required number of field trips.
 61. All glazing channels, reglets, stops, corners, angles, clips, saddle brackets, backing plates, reinforcing, etc. for a complete scope of work.
 62. All frame preparation for hardware.
-

-
63. All door and window frames, custom color as indicated, factory pre-finished.
 64. Rabbet stops and door silencers.
 65. Verify frame throat sizes to wall thickness prior to submittal. If Subcontractor submits frames with incorrect throat sizes, Subcontractor will be responsible for proper replacement frames as required to maintain schedule.
 66. All door and glazing frames to be diagonal bracing to structure at strike side with 1½" black iron or greater. At glazing every 4'-0" on center.
 67. Subcontractor understands that the details called out in the door schedule are an over-simplification of the actual conditions and that the frames' throats and the return sizes will vary. Subcontractor will detail actual conditions in coordination with the wall finish and partition type thickness.
 68. Aluminum frames to be manufactured 2" oversized in length for field cut.
 69. Non-rated, full height aluminum frames to be field measured and undercut to fit. Coordinate with Flooring Subcontractor and Contractor.
 70. Prepare and submit Maintenance Manual.

B. Project-Specific Scope, including but not limited to the following:

1. This scope of work shall include, but is not limited to, the following specification sections:
 - Section 08 81 00 – Glass and Glazing
 - Section 08 12 16 – Interior Aluminum Frames
 - Section 08 42 43 – Intensive Care Unit Critical Care Unit Entrances
 - Section 08 41 44 – Fire-Rated Entrances and Storefronts
 - Division 01 – General Requirements (as it relates to this scope of work)
 - Section 08 71 00 – Door Hardware (as applicable to Glass and Glazing work)
 - Section 07 92 10 – Joint Sealants (as applicable to Glass and Glazing work)
 2. Project to be priced by breakout below:
 - a. **Permit 1 – Make Ready Work**
 - b. **Permit 2 – Work in 24 ORs, Preop, & PACU**
 - c. **Permit 3 – ICU/ Surgery Waiting Room**
 3. This project will require all contractors and subcontractors to comply with Prevailing Wages. Include appropriate wage scales as determined by the California Department of Industrial Relations and comply with certified payroll requirements.
 4. Include all fees associated with the use of Textura billing management software.
 5. Refer to phasing, schedules, and logistics documents to confirm the extent of construction space that will be given to us at each phase and price accordingly.
 6. All work within the OR Suite to be performed in bunny suits. Bunny suits to be provided by Swinerton.
 7. Clean all glass and frames after install. Final cleaning at project completion by others.
 8. Include all sealants between dissimilar conditions as required. Sealant color as specified.
-

-
9. Include all grinding/ leveling of existing floor locations if required for level and plumb install of storefront and sliding doors.
 10. Shop Drawings:
 - a. Provide shop drawings for and design of the glass and glazing systems. Include calculations prepared, stamped, and wet signed by a Structural Engineer licensed in the State of California.
 - b. Shop drawings are to include any “critical dimensions” which need to be maintained by other subcontractors.
 - c. Indicate all joints and methods of attachment, extrusion tolerances, embeds, inserts and hardware locations with dimensions.
 - d. Shop drawings shall show all rough openings, interfaces and/or connections with adjacent systems or materials.
 - e. Clearly detail the locations and sizes of any blockouts to be provided or embeds to be installed by the Concrete Subcontractor. Furnish any embeds to be installed by the Concrete Subcontractor to the jobsite, clearly labeled as to the location to be installed. Include detailed layout plans and templates for embeds. Prior to placement of concrete, this Subcontractor is responsible to verify the installation of inserts/embeds is correct.
 11. Provide fire-rated glass and assemblies as required to meet wall rating requirements, occupancy separation requirements, etc.
 12. Provide tempered glass at all locations required by code.
 13. Provide all attachments of window systems to the building structure.
 14. Exposed fasteners are not permitted except as allowed by the Architect.
 15. Provide all door hardware, thresholds, and weather stripping for doors provided within this scope of work.
 16. Door hardware shall be provided per forthcoming specifications. Include cylinders with interchangeable construction cores and 4 keys each to be turned over to Swinerton.
 17. Adjust all doors, frames, and hardware prior to punchlist walkthrough as required for final approval.
 18. Provide protection between aluminum and non-compatible surfaces.
 19. Coordinate the installation of all clips or other materials in areas to receive sprayed on fireproofing before fireproofing is installed.
 20. Provide all finishes as specified. Provide a sufficient quantity of spray paint for touch up of each color. Repair any damage to factory applied finishes to leave work in a “no punchlist condition”.
 21. Inspect window frames installed and painted by others prior to installation of glass. Bring any unacceptable surfaces to the attention of Swinerton immediately.
 22. **Permit 1 – Make Ready:**
 - a. No Scope
 23. **Permit 2 – Work in 24 ORs, Prop, & PACU:**
 - a. Furnish and install break-away sliding doors:
 1. ISO PREP and PED PREPREC per A-G113 (7EA)
 2. PREPREC per A-H113 (6EA)
-

3. ISO RECOV per A-J113 (6EA)

- b. Sliding auto doors (2) at OR 45 CVOR/Pump Room & OR 46 CVOR/Pump Room.
 - 1. Include auto operators at these locations.
- c. Office 3P502 rated clearstory window per C1/A-G401, assume 1 hour smoke barrier and glass is 90 minute rating per RFI 007
- d. OR 44 Viewing window and OR 22 window to include integrated blinds, and frames, provide pricing based on OR 35 window specifications.
- e. Furnish and install clearstory window assembly the length of the room for Reception 3P502. Refer to elevation at Detail C1 on A-G411, Keynote 5163.
- f. Furnish power boosters and/or transformers if required for electrified hardware. Coordinate hardware with the security requirements shown on the contract documents and make modifications as needed to ensure the functionality of the doors and hardware to meet the design intent. Attend a coordination meeting at the jobsite with Swinerton, the owner's representatives, the design team, and the Electrical Subcontractor to work out the details for doors that tie into the security system, and/or any other building system.
- g. Include all necessary preparation for security hardware as shown and specified. Provide all door and frame preparations for hardware and for routing wiring to electric locks or other hardware requiring an electrical connection. Include any door contacts shown for the doors within this scope.
- h. Adjust all doors, frames, and hardware prior to punchlist walkthrough as required for final approval.
- i. Provide glazing in all side-lite frames.
- j. Provide all metal extrusions, glazing types, fasteners, accessories, sealants, glazing stops, spacers, setting blocks, shims, tape, gaskets, glass channels, tracks, aluminum caps, sheet metal flashings, closures, trim, angles, clips, support members, brackets, seismic bracing, blocking, steel reinforcement, etc. as required for a complete installation.
- k. **Lead lined glass:** Furnish and install Lead lined windows at the following locations:
 - 1. OR 35 Control room (735A) and OR 25 (735) Viewing window. Window and Frame will be provided by "Ray-Bar and Radiation Protection Products". Hybrid OR 35 frame to be hollow metal frame and window size to be 4'-0" x 9'-0".
 - 2. Assume glass to have a lead lined equivalency rating of 2.0 lb/sf, minimum.
- l. Provide Sample and validated specimen reports per TIO for scope items that pertain to work installed.
- m. Provide Sample and Validated specimen reports per TIO for scope items that pertain to work installed for all permits applicable.

C. Alternate Bid Items: Alternate prices include all labor, equipment, material, supervision, project management, travel costs, delivery, taxes, overhead and profit.

- 1. **Permit 3 – ICU/Surgery Waiting Room (Will be issued as a change order after design is complete)**
 - a. Storefront walls (Decorative Glass) and doors at Reception/Waiting entrance.
 - b. Decorative glazing at wall that separates waiting room space, see elevations.

- c. Provide Sample and Validated specimen reports per TIO for scope items that pertain to work installed for all permits applicable.

D. Exclusions:

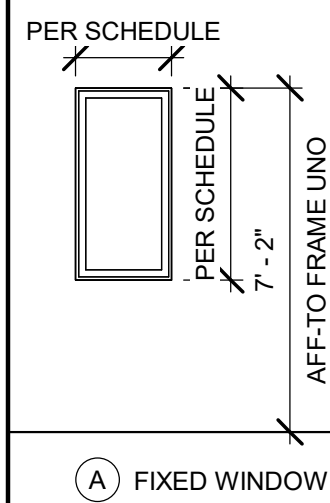
- a. Onsite General Liability and Worker's Compensation insurance (by Universities UCIP program)
- b. Testing and Special Inspections (by Owner's Testing Agency).
- c. Building permits & fees (Owner).
- d. Two grid lines and an elevation benchmark on each floor (by Swinerton).
- e. Exterior glazing systems
- f. Framed mirrors.
- g. Electrical rough-in and final hook-up of security hardware (Electrical Subcontractor).
- h. Single point of connection to each door with an automatic operator (Electrical Subcontractor).

6/3/2025 10:31:55 AM TAYLOR & ASSOCIATES ARCHITECTS IF THIS DRAWING IS NOT 30x42" IT HAS BEEN MODIFIED

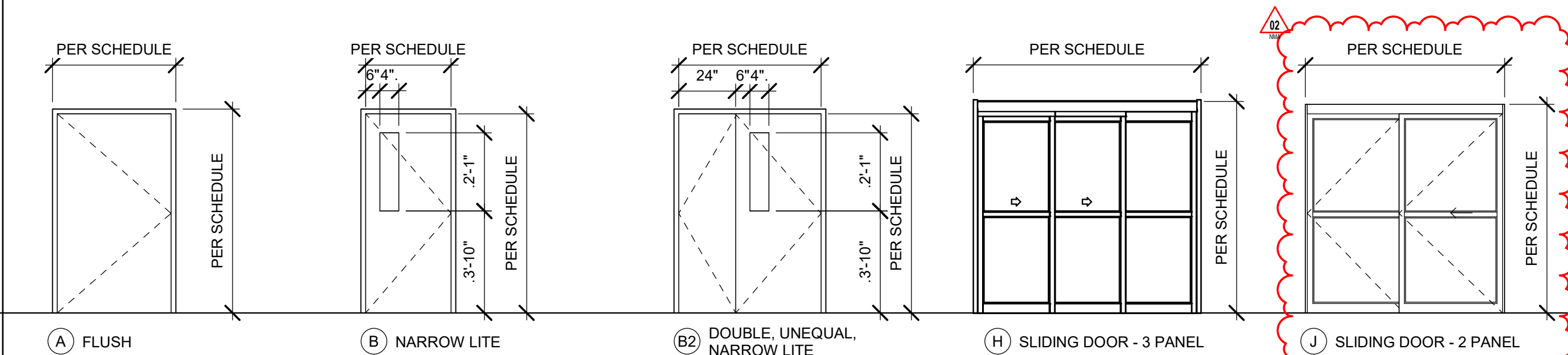
FILE NAME: Autodesk Docs\\6490\\UCDH-Med Ctr OF Mod\\6490-UCDH-Med Ctr OF Mod-R24.rvt

WINDOW SCHEDULE														
MARK	SIZE		TYPE	FINISH	MATERIAL	GLAZING	TYPE	FIRE RATING	DETAILS					COMMENTS
	WIDTH	HEIGHT							HEAD	JAMB	SILL	MULLIONS		
												HORIZONT AL	VERTICAL	
735	2' - 4"	3' - 3"	A		HM	GL-B			E3/A-1602	E3/A-1602	E3/A-1602			70
735A	10' - 0"	4' - 1"	A		HM	GL-B			E3/A-1602	E3/A-1602	E3/A-1602			70

WINDOW TYPE LEGEND



DOOR TYPE LEGEND



DOOR SCHEDULE NOTES	
NO.	NOTE
ACCESSORIES	
01	DOOR SEAL
02	KICK PLATE
03	ONE ACTIVE LEAF - AUTO FLUSH BOLT
04	AUTOMATIC DOOR BOTTOM
05	MOP PLATE
06	34" ARMOR PLATE (SS)
07	ARMOR PLATE BOTH SIDES OF DOOR
08	DOOR FRAME PROTECTION (ACROVYN)
09	GASKETING
10	ASTRAGAL
11	DOOR SWEEP
DOOR STOPS	
12	OVERHEAD STOP
13	FLOOR STOP
14	WALL BUMPER
HINGES	
21	ELECTRIFIED HINGES
22	HEAVY DUTY
24	CONTINUOUS HINGE
LEVER / LOCKSET / LOCKS	
31	PRIVACY LOCKSET
32	CLASSROOM LOCKSET
33	STORAGE ROOM LOCKSET
34	ELECTRIFIED LOCKSET
35	PASSAGE LATCH
36	OFFICE LOCKSET
37	EXIT / PANIC HARDWARE
38	CYLINDER LOOKS AT BASE OF DOORS
39	ELECTRIFIED STRIKE
40	CARD READER
41	KEYPAD
42	RESCUE HARDWARE
43	HOSPITAL LATCH
OPENER / CLOSER	
51	CLOSER
52	DOOR SILENCER
53	180 DEGREE OUTSWING CLOSER
54	AUTOMATIC DOOR SENSOR AT BOTH SIDE OF THE DOOR
55	DOOR ACTUATOR, BAR
56	DOOR ACTUATOR, HILOW SQAURE
57	DOOR ACTUATOR, HILOW CIRCLE
58	ADD HOLD OPEN, MOUNT IN PARALLEL WITH 5 SCREWS
59	MAGNETIC HOLD OPEN
60	CLOSER, HEAVY DUTY
PROPERTIES	
70	LEAD LINED, MATCH EQUIVALENT LEAD SHIELDING WEIGHT TO ADJACENT
71	LEAD LINED, (SPECIFY POUND)
72	MRI SHIELDED DOOR
73	EXTERIOR DOOR
74	NEW DOOR IN EXISTING FRAME

GLAZING TYPE - PACKAGE 2	
TYPE	DESCRIPTION
GL-A	1/4" CLEAR TEMPERED GLASS
GL-B	2" LEAD WINDOW

DOOR SCHEDULE GENERAL NOTES	
1.	REFER TO A-0002 FOR GENERAL DOOR NOTES.
2.	REFER TO ABBREVIATIONS CODES ON SHEET G-0001.
3.	PAINT DOOR AND FRAME TO MATCH ADJACENT WALL, UNO.
4.	PROVIDE DOOR HARDWARE THAT CAN OPEN 180 DEGREES TO THE DOORS THAT SWING OUT TO THE HALLWAY AND CORRIDORS.
5.	EXISTING FIRE RATED DOORS SHALL BE TIGHTLY FITTING, WITH GAPS NO MORE THAN 1/8" AT JAMBS AND HEAD, AND 3/4" MAXIMUM AT BOTTOM. REFER TO NFPA 80 (2019) 8.3.1.7 CLEARANCES. WHERE REQUIRED, PROVIDE JAMB ADAPTERS SUCH AS "ACTIVE FIRE DOOR PRODUCTS - ACTIVE DOOR GAP FILLER" AS NEEDED. FINISH TO MATCH DOOR FRAME WHEN ATTACHED TO DOOR FRAME. VERIFY FINISH WITH ARCHITECT WHEN ATTACHED TO DOOR.

EXISTING DOOR SCHEDULE - PACKAGE 2 / ALL PHASES																
MARK	SIZE			DOOR				DETAIL				FRAME		FIRE RATING LABEL	HARDWARE SET NO	NOTES
	W	HT	THK	MATL	FIN	ELV	GLZ	HEAD	JAMB	SILL	MATL	FIN				
Level 3																
(E)3P721X	6'-0"	8'-0"	0'-1 3/4"	(E)	(E)	B2	(E)	(E)	(E)	(E)	(E)	(E)	NIR	(E)	REPLACE CLOSER; INSTALL LCN 4041; PARALLEL ARM W/ (5) SCREWS	
(E)3P722X	6'-0"	8'-0"	0'-1 3/4"	(E)	(E)	B2	(E)	(E)	(E)	(E)	(E)	(E)	NIR	(E)	REPLACE CLOSER; INSTALL LCN 4041; PARALLEL ARM W/ (5) SCREWS	
(E)3P723X	6'-0"	8'-0"	0'-1 3/4"	(E)	(E)	B2	(E)	(E)	(E)	(E)	(E)	(E)	NIR	(E)	REPLACE CLOSER; INSTALL LCN 4041; PARALLEL ARM W/ (5) SCREWS	
(E)3P724X	6'-0"	8'-0"	0'-1 3/4"	(E)	(E)	B2	(E)	(E)	(E)	(E)	(E)	(E)	NIR	(E)	REPLACE CLOSER; INSTALL LCN 4041; PARALLEL ARM W/ (5) SCREWS	
(E)3P725X	6'-0"	8'-0"	0'-1 3/4"	(E)	(E)	B2	(E)	(E)	(E)	(E)	(E)	(E)	NIR	(E)	REPLACE CLOSER; INSTALL LCN 4041; PARALLEL ARM W/ (5) SCREWS	
(E)3P726X	6'-0"	8'-0"	0'-1 3/4"	(E)	(E)	B2	(E)	(E)	(E)	(E)	(E)	(E)	NIR	(E)	REPLACE CLOSER; INSTALL LCN 4041; PARALLEL ARM W/ (5) SCREWS	
(E)3P727X	6'-0"	8'-0"	0'-1 3/4"	(E)	(E)	B2	(E)	(E)	(E)	(E)	(E)	(E)	NIR	(E)	REPLACE CLOSER; INSTALL LCN 4041; PARALLEL ARM W/ (5) SCREWS	
(E)3P728X	6'-0"	8'-0"	0'-1 3/4"	(E)	(E)	B2	(E)	(E)	(E)	(E)	(E)	(E)	NIR	(E)	REPLACE CLOSER; INSTALL LCN 4041; PARALLEL ARM W/ (5) SCREWS	
(E)3P731X	6'-0"	8'-0"	0'-1 3/4"	(E)	(E)	B2	(E)	(E)	(E)	(E)	(E)	(E)	NIR	(E)	REPLACE CLOSER; INSTALL LCN 4041; PARALLEL ARM W/ (5) SCREWS	
(E)3P732X	6'-0"	8'-0"	0'-1 3/4"	(E)	(E)	B2	(E)	(E)	(E)	(E)	(E)	(E)	NIR	(E)	REPLACE CLOSER; INSTALL LCN 4041; PARALLEL ARM W/ (5) SCREWS	
(E)3P733X	6'-0"	8'-0"	0'-1 3/4"	(E)	(E)	B2	(E)	(E)	(E)	(E)	(E)	(E)	NIR	(E)	REPLACE CLOSER; INSTALL LCN 4041; PARALLEL ARM W/ (5) SCREWS	
(E)3P734X	6'-0"	8'-0"	0'-1 3/4"	(E)	(E)	B2	(E)	(E)	(E)	(E)	(E)	(E)	NIR	(E)	REPLACE CLOSER; INSTALL LCN 4041; PARALLEL ARM W/ (5) SCREWS	
(E)3P736X	6'-0"	8'-0"	0'-1 3/4"	(E)	(E)	B2	(E)	(E)	(E)	(E)	(E)	(E)	NIR	(E)	REPLACE CLOSER; INSTALL LCN 4041; PARALLEL ARM W/ (5) SCREWS	
(E)3P737X	6'-0"	8'-0"	0'-1 3/4"	(E)	(E)	B2	(E)	(E)	(E)	(E)	(E)	(E)	NIR	(E)	REPLACE CLOSER; INSTALL LCN 4041; PARALLEL ARM W/ (5) SCREWS	
(E)3P738X	6'-0"	8'-0"	0'-1 3/4"	(E)	(E)	B2	(E)	(E)	(E)	(E)	(E)	(E)	NIR	(E)	REPLACE CLOSER; INSTALL LCN 4041; PARALLEL ARM W/ (5) SCREWS	
(E)3P741X	6'-0"	8'-0"	0'-1 3/4"	(E)	(E)	B2	(E)	(E)	(E)	(E)	(E)	(E)	NIR	(E)	REPLACE CLOSER; INSTALL LCN 4041; PARALLEL ARM W/ (5) SCREWS	
(E)3P742X	6'-0"	8'-0"	0'-1 3/4"	(E)	(E)	B2	(E)	(E)	(E)	(E)	(E)	(E)	NIR	(E)	REPLACE CLOSER; INSTALL LCN 4041; PARALLEL ARM W/ (5) SCREWS	
(E)3P743X	6'-0"	8'-0"	0'-1 3/4"	(E)	(E)	B2	(E)	(E)	(E)	(E)	(E)	(E)	NIR	(E)	REPLACE CLOSER; INSTALL LCN 4041; PARALLEL ARM W/ (5) SCREWS	
(E)3P744X	6'-0"	8'-0"	0'-1 3/4"	(E)	(E)	B2	(E)	(E)	(E)	(E)	(E)	(E)	NIR	(E)	REPLACE CLOSER; INSTALL LCN 4041; PARALLEL ARM W/ (5) SCREWS	
(E)3P745X	6'-0"	8'-0"	0'-1 3/4"	(E)	(E)	B2	(E)	(E)	(E)	(E)	(E)	(E)	NIR	(E)	REPLACE CLOSER; INSTALL LCN 4041; PARALLEL ARM W/ (5) SCREWS	
(E)3P746X	6'-0"	8'-0"	0'-1 3/4"	(E)	(E)	B2	(E)	(E)	(E)	(E)	(E)	(E)	NIR	(E)	REPLACE CLOSER; INSTALL LCN 4041; PARALLEL ARM W/ (5) SCREWS	
(E)3P747X	6'-0"	8'-0"	0'-1 3/4"	(E)	(E)	B2	(E)	(E)	(E)	(E)	(E)	(E)	NIR	(E)	REPLACE CLOSER; INSTALL LCN 4041; PARALLEL ARM W/ (5) SCREWS	
(E)3P748X	6'-0"	8'-0"	0'-1 3/4"	(E)	(E)	B2	(E)	(E)	(E)	(E)	(E)	(E)	NIR	(E)	REPLACE CLOSER; INSTALL LCN 4041; PARALLEL ARM W/ (5) SCREWS	

DOOR SCHEDULE - SEGMENT D / O.R. PHASE 1.2																
MARK	SIZE			DOOR				DETAIL			FRAME		FIRE RATING LABEL	HARDWARE SET NO	NOTES	
				MATL	FIN	ELV	GLZ	HEAD	JAMB	SILL	MATL	FIN				
	W	HT	THK													
Level 3																
3P735X	6'-0"	8'-0"	0'-1 3/4"	WD	PL	B2	GL-A	A3/A-1602	C3/A-1602	A3/A-1503	HM	PT	NIR	01	07, 08, 09, 10, 11, 12, 43, 60, 71(1)	
3P735Y	3'-6"	7'-0"	0'-1 3/4"	WD	PL	B	GL-A	E9/A-1602	C9/A-1602	A9/A-1602	HM	PT	NIR	02	07, 08, 09, 11, 12, 22, 43, 60	
3P923X	4'-0"	7'-0"	0'-1 3/4"	WD	PL	A	N/A	E9/A-1602	C9/A-1602	A9/A-1602	(E)	PT	45 MIN	05	06, 08, 09, 14, 34, 40, 51, 74; RECERTIFY FRAME RATING.	
3P925X	3'-6"	7'-0"	0'-1 3/4"	WD	PL	B	GL-A	E9/A-1602	C9/A-1602	A9/A-1602	HM	PT	NIR	02	07, 08, 09, 12, 22, 43, 60	

DOOR SCHEDULE - SEGMENT F / O.R. PHASE 6																
MARK	SIZE			DOOR				DETAIL			FRAME		FIRE RATING LABEL	HARDWARE SET NO	NOTES	
	W	HT	THK	MATL	FIN	ELV	GLZ	HEAD	JAMB	SILL	MATL	FIN				
Level 3																
3P745AX	4'-0"	7'-0"	0'-1 3/4"	WD	PL	B	GL-A	E9/A-1602	C9/A-1602	A9/A-1602	HM	PT	N/R	03	07, 08, 09, 12, 22, 43, 60	
3P745AY	8'-0"	7'-0"	0'-6"	AL	AN	H	GL-A	G7/A-1602	E7/A-1602	-	AL	AN	N/R	-	40; HARDWARE PER MFR	
3P745AZ	8'-0"	7'-0"	0'-6"	AL	AN	H	GL-A	G7/A-1602	E7/A-1602	-	AL	AN	N/R	-	40; HARDWARE PER MFR	
3P745Y	3'-6"	7'-0"	0'-1 3/4"	WD	PL	B	GL-A	E9/A-1602	C9/A-1602	A9/A-1602	HM	PT	N/R	02	07, 08, 09, 11, 12, 22, 43, 60	
3P746Y	3'-6"	7'-0"	0'-1 3/4"	WD	PL	B	GL-A	A3/A-1602	C3/A-1602	A9/A-1602	HM	PT	N/R	02	07, 08, 09, 11, 12, 22, 43, 60	

DOOR SCHEDULE - SEGMENT G / PACU PHASE 1.1																
MARK	DOOR							DETAIL			FRAME		FIRE RATING LABEL	HARDWARE SET NO	NOTES	
	SIZE			MATL	FIN	ELV	GLZ	HEAD	JAMB	SILL	MATL	FIN				
	W	HT	THK													
Level 3																
3P537X	6'-10"	7'-0"	0'-1 3/4"	AL	AN	J	GL-A	B7/A-1602	A7/A-1602	-	AL	AN	NIR	-	HARDWARE PER MFR; VERIFY (E) RO PRIOR TO FABRICATION	
3P539X	6'-10"	7'-0"	0'-1 3/4"	AL	AN	J	GL-A	B7/A-1602	A7/A-1602	-	AL	AN	NIR	-	HARDWARE PER MFR; VERIFY (E) RO PRIOR TO FABRICATION	
3P541X	6'-10"	7'-0"	0'-1 3/4"	AL	AN	J	GL-A	B7/A-1602	A7/A-1602	-	AL	AN	NIR	-	HARDWARE PER MFR; VERIFY (E) RO PRIOR TO FABRICATION	
3P543X	6'-10"	7'-0"	0'-1 3/4"	AL	AN	J	GL-A	B7/A-1602	A7/A-1602	-	AL	AN	NIR	-	HARDWARE PER MFR; VERIFY (E) RO PRIOR TO FABRICATION	
3P554X	6'-10"	7'-0"	0'-1 3/4"	AL	AN	J	GL-A	B7/A-1602	A7/A-1602	-	AL	AN	NIR	-	HARDWARE PER MFR; VERIFY (E) RO PRIOR TO FABRICATION	
3P556X	6'-10"	7'-0"	0'-1 3/4"	AL	AN	J	GL-A	B7/A-1602	A7/A-1602	-	AL	AN	NIR	-	HARDWARE PER MFR; VERIFY (E) RO PRIOR TO FABRICATION	
3P557X	6'-10"	7'-0"	0'-1 3/4"	AL	AN	J	GL-A	B7/A-1602	A7/A-1602	-	AL	AN	NIR	-	HARDWARE PER MFR; VERIFY (E) RO PRIOR TO FABRICATION	

DOOR SCHEDULE - SEGMENT H / PACU PHASE 2.1															
MARK	SIZE			DOOR				DETAIL		SILL	FRAME		FIRE RATING LABEL	HARDWARE SET NO	NOTES
	W	HT	THK	MATL	FIN	ELV	GLZ	HEAD	JAMB						
Level 3															
3P561X	6'-10"	7'-0"	0'-1 3/4"	AL	AN	J	GL-A	B7/A-1602	A7/A-1602	-	AL	AN	NIR	-	HARDWARE PER MFR; VERIFY (E) RO PRIOR TO FABRICATION
3P563X	6'-10"	7'-0"	0'-1 3/4"	AL	AN	J	GL-A	B7/A-1602	A7/A-1602	-	AL	AN	NIR	-	HARDWARE PER MFR; VERIFY (E) RO PRIOR TO FABRICATION
3P565X	6'-10"	7'-0"	0'-1 3/4"	AL	AN	J	GL-A	B7/A-1602	A7/A-1602	-	AL	AN	NIR	-	HARDWARE PER MFR; VERIFY (E) RO PRIOR TO FABRICATION
3P567X	6'-10"	7'-0"	0'-1 3/4"	AL	AN	J	GL-A	B7/A-1602	A7/A-1602	-	AL	AN	NIR	-	HARDWARE PER MFR; VERIFY (E) RO PRIOR TO FABRICATION
3P569X	6'-10"	7'-0"	0'-1 3/4"	AL	AN	J	GL-A	B7/A-1602	A7/A-1602	-	AL	AN	NIR	-	HARDWARE PER MFR; VERIFY (E) RO PRIOR TO FABRICATION
3P582X	6'-10"	7'-0"	0'-1 3/4"	AL	AN	J	GL-A	B7/A-1602	A7/A-1602	-	AL	AN	NIR	-	HARDWARE PER MFR; VERIFY (E) RO PRIOR TO FABRICATION
3P601X	3'-0"	7'-0"	0'-1 3/4"	HM	PTD	A	-	G6/A-1602	G6/A-1602	JA/A-1602	PTD	HM	45 MIN	04	07, 08, 09, 14, 22, 34, 40, 51

STANLEY

Access Technologies

PROCARE™
8300
SERIES

SINGLE SLIDE TRACKLESS

PROJECT INFORMATION

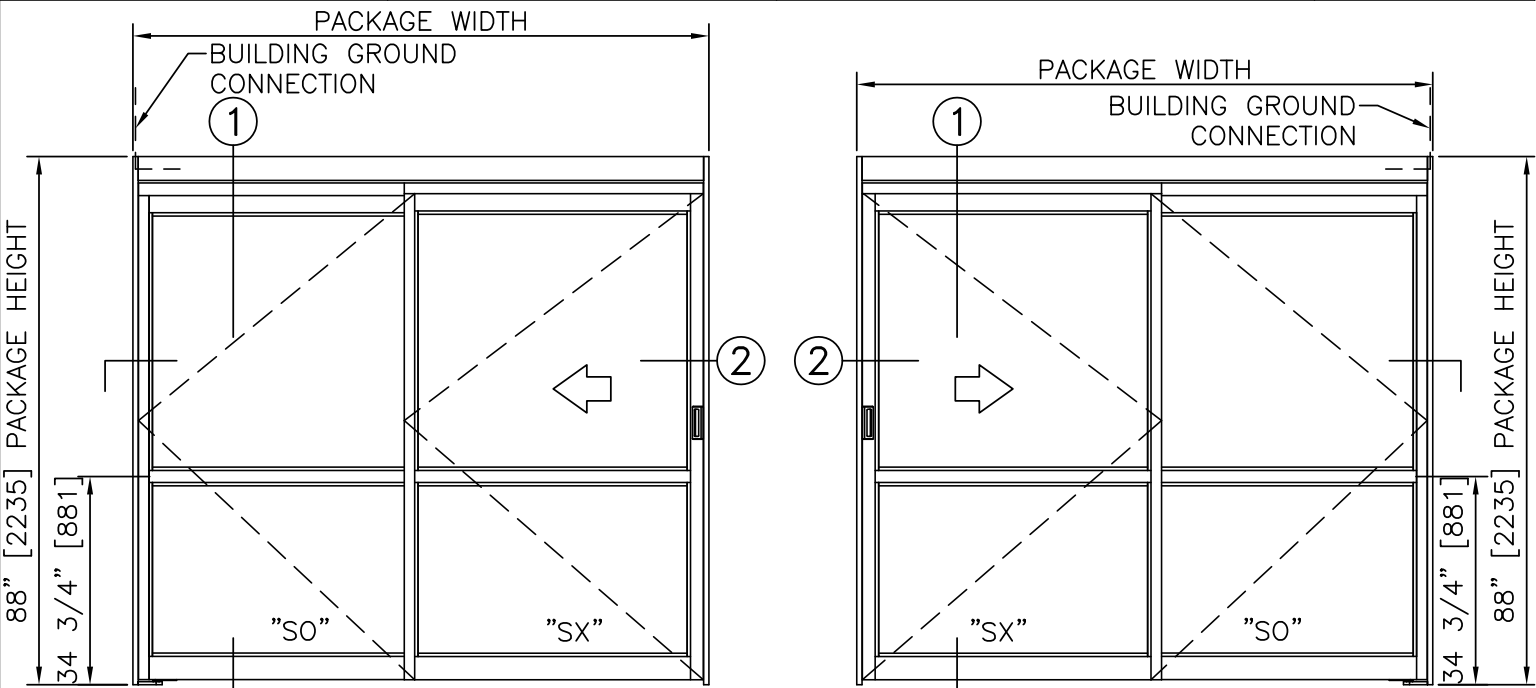
PROJECT NAME:

LOCATION:

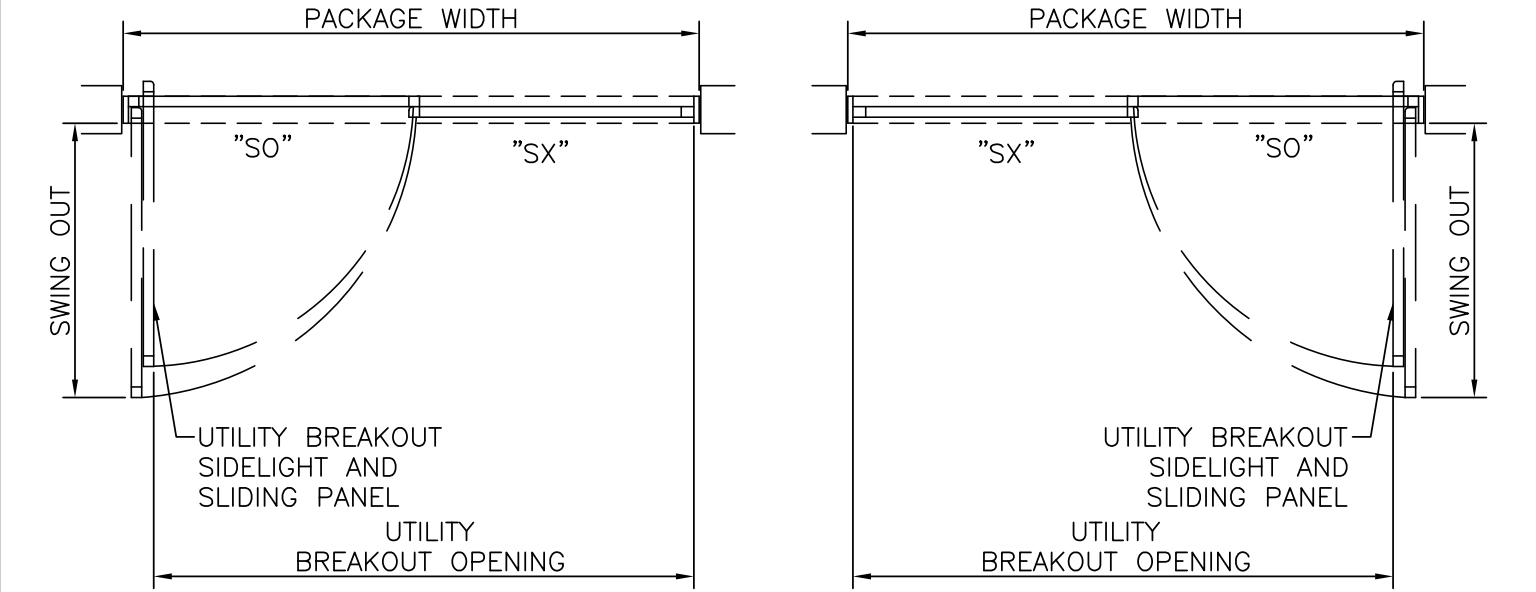
DOOR NUMBER(S):

DATE:

SHEET: OF

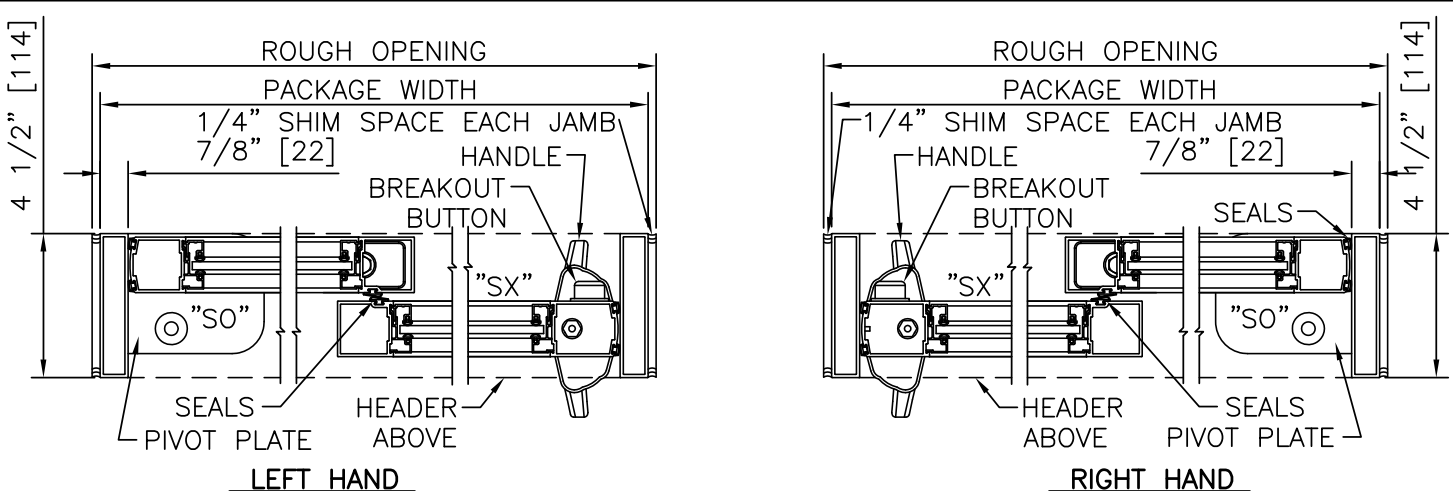


ELEVATION VIEW
SCALE: 3/8" = 1'-0"

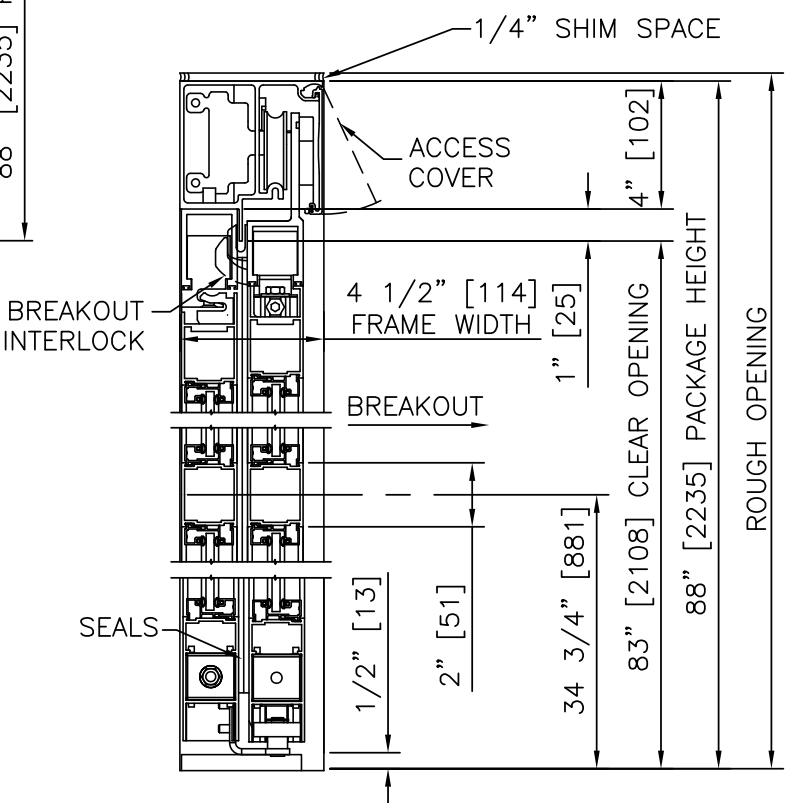


PLAN VIEW
SCALE: 3/8" = 1'-0"

- NOTES
1. CONNECTION TO BUILDING GROUND BY ELECTRICAL CONTRACTOR.
 2. ROUGH OPENING SHALL PROVIDE 1/4"[6] SHIM SPACE ON SIDES AND TOP OF PACKAGE.
 3. STANDARD PACKAGE EXCLUDES LATCHING OR LOCKING. POSITIVE LATCHING AND LOCKING SYSTEMS AVAILABLE; POSITIVE LATCHING INCLUDED ON LEAKAGE RATED ASSEMBLIES.
 4. STANDARD GLAZING STOPS FOR ALL PANELS ARE 1/4"[6]; 1/2"[13], 5/8"[16], AND 1"[25] AVAILABLE.
 5. STANDARD STILES, BOTTOM RAILS AND MUNTINS SHOWN; BOTTOM RAILS TO 12"[305], AND 4 1/4"[108] MUNTINS AVAILABLE.
 6. SEE SPECIFICATIONS FOR ADDITIONAL INFORMATION.



HORIZONTAL SECTION
SCALE: 2" = 1'-0"



LEFT HAND & RIGHT HAND
VERTICAL SECTION
SCALE: 2" = 1'-0"

- PRODUCT OPTIONS
- FINISH
- ☒ ANODIZED CLEAR CL2
 - ☐ CUSTOM
- LATCHING/LOCKING
- ☐ POSITIVE LATCH
 - ☐ 1-POINT
 - ☐ LOCK INDICATOR
- BOTTOM RAILS
- ☐ STANDARD 4"
 - ☐ OPTIONAL 6" 8" 10" 12"
- MUNTINS
- ☐ STANDARD 2"
 - ☐ 4 1/4"
 - ☐ QUANTITY 0 1 2
- JAMBS
- ☒ 7/8" X 4 1/2" RECTANGULAR JAMB
 - ☐ 7/8" X 4 1/2" POCKET JAMB
 - ☐ 1 3/4" X 4 1/2" RECTANGULAR JAMB
 - ☐ 1 3/4" X 4 1/2" POCKET JAMB
- OTHER OPTIONS
- ☐ SMOKE & DRAFT CONTROL PACKAGE
 - ☐ ISOLATION PACKAGE (+/- PRESSURE)
 - ☐ ANTI-MICROBIAL COATING
 - ☐ TOUCH POINTS
 - ☐ PANELS, FRAME, HEADER
 - ☐ SELF CLOSING (SLIDING), W/ HOLD OPEN
 - ☐ STC PACKAGE

SINGLE SLIDE FORMULAS (7/8" JAMBS)

PACKAGE WIDTH = 2 X CLEAR DOOR OPENING + 7.6"[192]

CLEAR DOOR OPENING = 1/2 PACKAGE WIDTH - 3.8"[96]

UTILITY BREAKOUT WIDTH = PACKAGE WIDTH - 6.0"[152]

SX DOOR PANEL WIDTH = 1/2 PACKAGE WIDTH + 1.6"[41]

SO DOOR PANEL WIDTH = 1/2 PACKAGE WIDTH - 1.3"[32]

SWING OUT WIDTH = SX PANEL WIDTH - 2.3"[57]

SINGLE SLIDE FORMULAS (1 3/4" JAMBS)

PACKAGE WIDTH = 2 X CLEAR DOOR OPENING + 9.3"[236]

CLEAR DOOR OPENING = 1/2 PACKAGE WIDTH - 4.7"[118]

UTILITY BREAKOUT WIDTH = PACKAGE WIDTH - 7.8"[197]

SX DOOR PANEL WIDTH = 1/2 PACKAGE WIDTH + 0.7"[19]

SO DOOR PANEL WIDTH = 1/2 PACKAGE WIDTH - 2.1"[54]

SWING OUT WIDTH = SX PANEL WIDTH - 2.3"[57]

TYPICAL PACKAGE DIMENSIONS (7/8" JAMBS)					
PACKAGE WIDTH	NOMINAL CLEAR DOOR OPENING	SLIDING DOOR NOMINAL WIDTH	SIDELIGHT NOMINAL WIDTH	UTILITY BREAKOUT NOMINAL WIDTH	SWING OUT NOMINAL WIDTH
84" [2134]	38.2" [971]	43.6" [1108]	40.8" [1035]	78.0" [1981]	41.4" [1051]
96" [2438]	44.2" [1123]	49.6" [1260]	46.8" [1187]	90.0" [2286]	47.4" [1203]
108" [2743]	50.2" [1276]	55.6" [1413]	52.8" [1340]	102.0" [2591]	53.4" [1355]

SINGLE SLIDE TRACKLESS

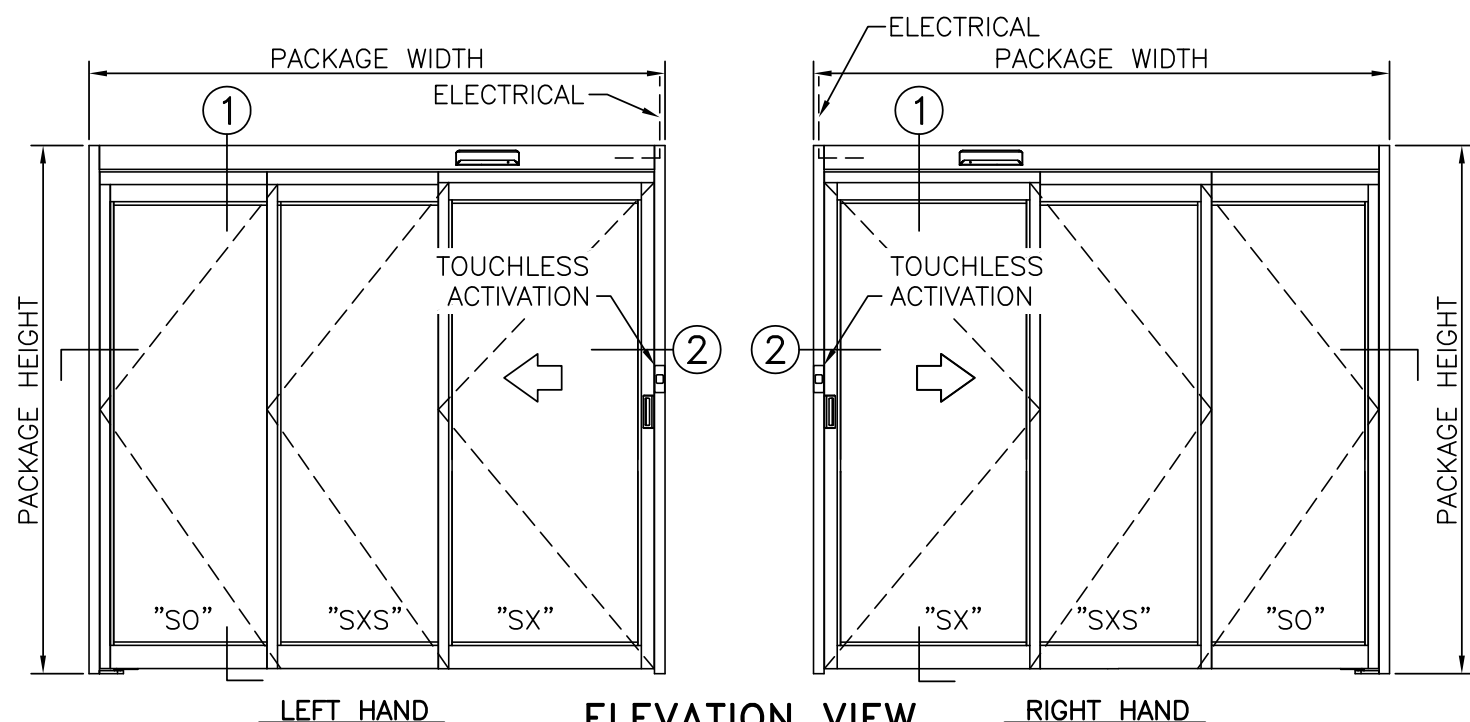
PROCARE™
8300
SERIES

STANLEY
Access Technologies

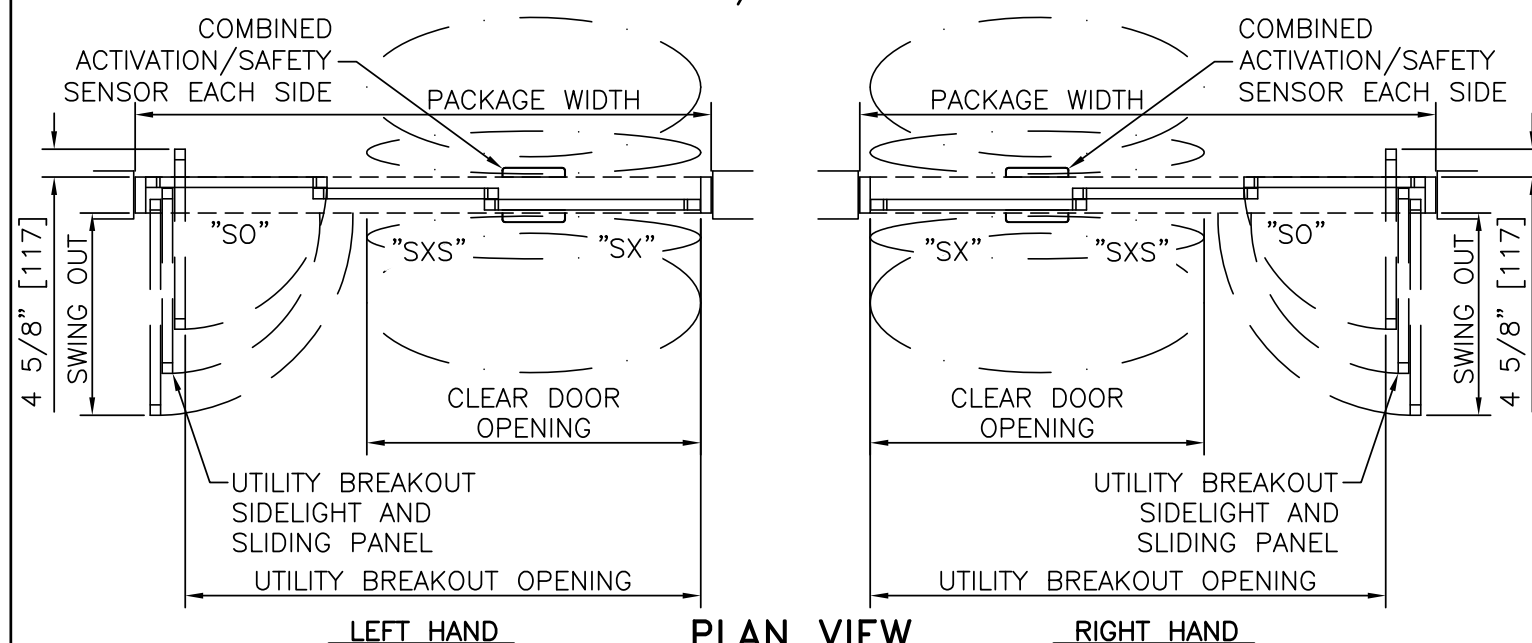


PROCARE™ 8500A SERIES

3-PANEL TELESCOPIC TRACKLESS, AUTOMATIC	
PROJECT INFORMATION	
PROJECT NAME:	
LOCATION:	
DOOR NUMBER(S):	
DATE:	SHEET: OF



ELEVATION VIEW
SCALE: 3/8" = 1'-0"

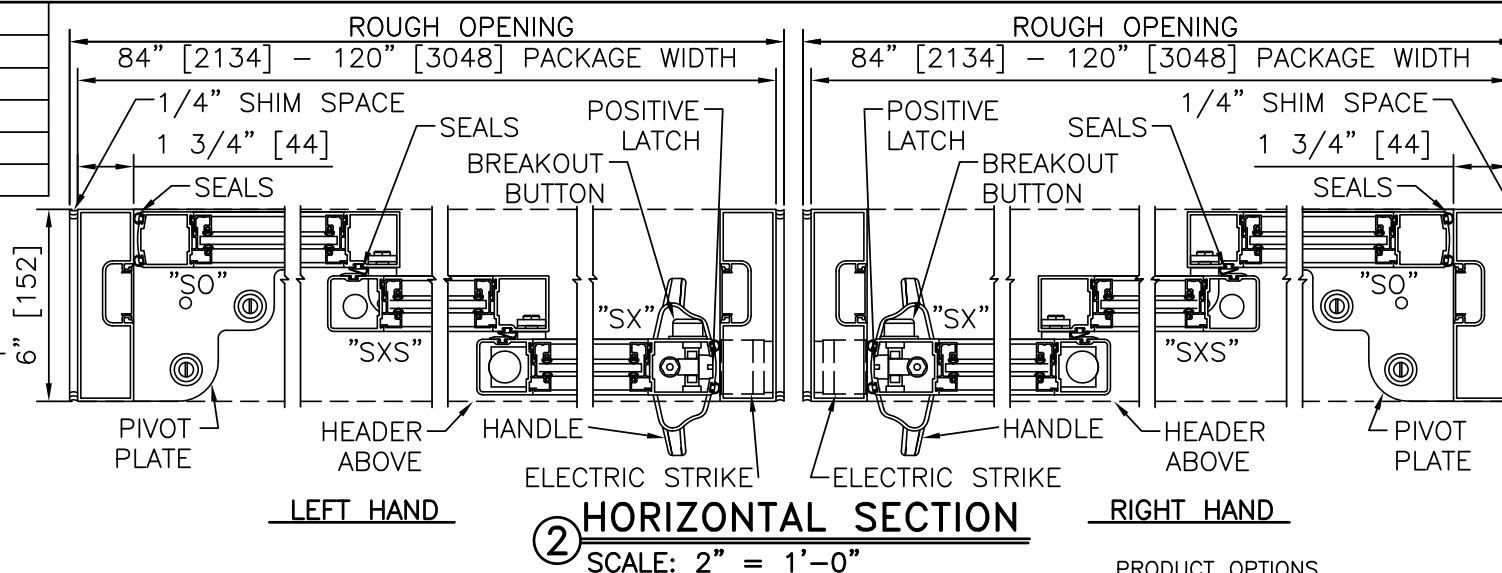


PLAN VIEW

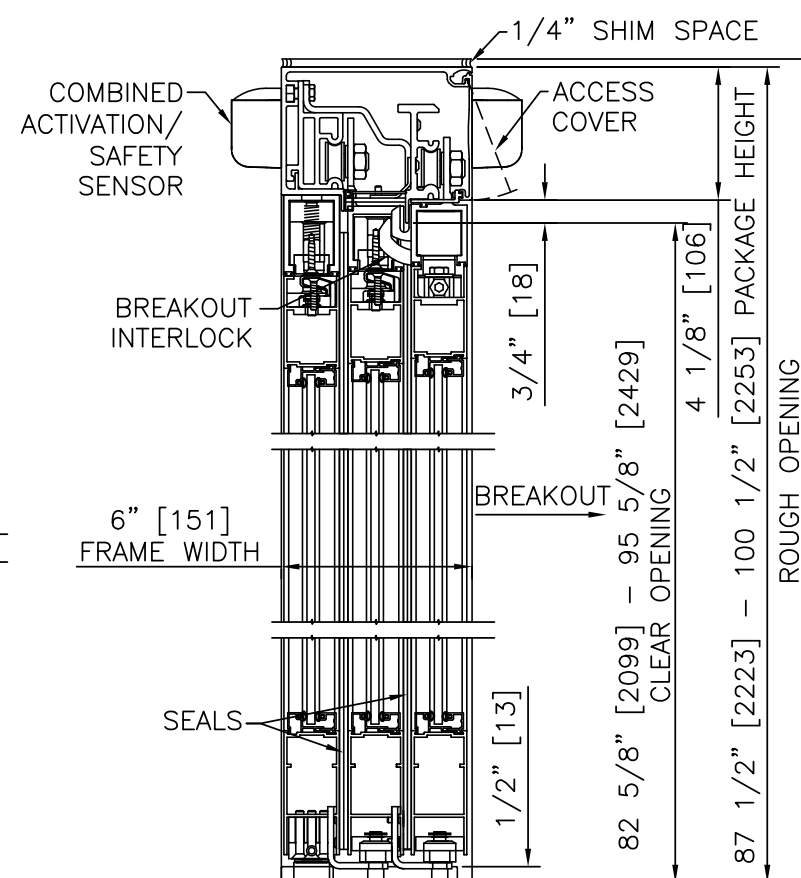
SCALE: $3/8" = 1'-0"$

NOTES

1. ELECTRICAL REQUIREMENTS: BY ELECTRICAL CONTRACTOR.
 - 1.1. 120 VAC, 5 AMP MIN TO POWER OPERATOR
 - 1.2. CONTROL CIRCUIT FROM REMOTE ACTIVATION TO OPERATOR.
2. ROUGH OPENING SHALL PROVIDE 1/4"[6] SHIM SPACE ON SIDES AND TOP OF PACKAGE.
3. STANDARD PACKAGE EXCLUDES LATCHING OR LOCKING. POSITIVE LATCHING AND LOCKING SYSTEMS AVAILABLE; POSITIVE LATCHING INCLUDED ON LEAKAGE RATED ASSEMBLIES; SMOKE & DRAFT, AND ISOLATION PACKAGES.
4. STANDARD GLAZING STOPS FOR ALL PANELS ARE 1/4"[6], 1/2"[13], 5/8"[16], AND 1"[25] AVAILABLE.
5. STANDARD STILES, BOTTOM RAILS AND MUNTINS SHOWN; BOTTOM RAILS TO 12"[305], AND MUNTINS TO 4 1/4"[108] AVAILABLE.
6. SLIDING PANELS MUST BE DRIVEN TO FULL OPEN POSITION AND ENGAGE FLOOR MOUNTED HINGE PINS PRIOR TO PANEL BREAKOUT.
7. LIMITS OF ACTIVATION AND SAFETY ZONES ARE FOR REFERENCE ONLY; SEE ANSI/BHMA A156.10 FOR DETAILED REQUIREMENTS. SENSORS NOT REQUIRED WHEN INSTALLED TO OPERATE UNDER ANSI/BHMA A156.38 STANDARD.
8. SEE SPECIFICATIONS FOR ADDITIONAL INFORMATION.



② HORIZONTAL SECTION
SCALE: 2" = 1'-0"



LEFT HAND & RIGHT HAND
1 VERTICAL SECTION
 SCALE: 2" = 1'-0"

TYPICAL PACKAGE DIMENSIONS						
PACKAGE WIDTH	NOMINAL CLEAR DOOR OPENING	SLIDING DOOR NOMINAL WIDTH	SLIDING DOOR NOMINAL WIDTH	SIDELIGHT NOMINAL WIDTH	UTILITY BREAKOUT NOMINAL WIDTH	SWING OUT NOMINAL WIDTH
84" [2134]	47.3" [1201]	32.3 [822]	27.0" [685]	25.4" [646]	74.0" [1880]	30.4" [772]
96" [2438]	55.7" [1414]	36.0 [914]	30.6" [777]	30.2" [766]	86.0" [2185]	34.0" [864]
108" [2743]	63.4" [1611]	40.2 [1021]	34.8" [885]	33.7" [856]	98.0" [2489]	38.3" [972]
120" [3048]	71.2" [1808]	44.4 [1129]	39.1" [992]	37.2" [946]	110.0" [2794]	42.5" [1079]

- PRODUCT OPTIONS

OPERATING STANDARD
☐ A156.10 ☐ A156.38

FINISH
☐ ANODIZED CLEAR CL2
☐ CUSTOM

LATCHING/LOCKING
☐ POSITIVE LATCH W/ ELECTRIC STRIKE
☐ SECURITY LOCK W/ DUAL ELECTRIC STRIKE
☐ 1-POINT LOCK ☐ LOCK INDICATOR

BOTTOM RAILS
☐ STANDARD 4"
☐ OPTIONAL 6" 8" 10" 12"

MUNTINS
☐ 2" ☐ 4 1/4"
☐ QUANTITY 0 1 2

ACTIVATION AND SAFETY
☒ COMBINED ACTIVATION/SAFETY SENSORS
☒ TOUCHLESS ACTIVATION

GLAZING
☐ TEMPERED GLASS
☐ PRIVACY GLASS BLINDS
☐ ELECTRIC PRIVACY GLASS

OTHER OPTIONS
☐ SMOKE & DRAFT CONTROL PACKAGE
☐ ISOLATION PACKAGE (+/- PRESSURE)
☐ CLEAN ROOM PKG (ISO 14644-1, CL 4.5)
☐ ANTI-MICROBIAL COATING
☐ TOUCH POINTS
☐ PANELS, FRAME, HEADER
☐ STC PACKAGE

3-PANEL FORMULAS (84" TO 94" PACKAGE WIDTH)
 PACKAGE WIDTH = CLEAR DOOR OPENING / 0.639 + 10.00"[254]
 CLEAR DOOR OPENING = 0.639 * PACKAGE WIDTH - 6.39"[162]
 UTILITY BREAKOUT WIDTH = PACKAGE WIDTH - 9.99"[254]
 SX DOOR PANEL WIDTH = 0.361 * PACKAGE WIDTH + 2.02"[51]
 SXS DOOR PANEL WIDTH = 0.361 * PACKAGE WIDTH - 3.36"[85]
 SO DOOR PANEL WIDTH = 0.278 * PACKAGE WIDTH + 2.10"[53]
 SWING OUT WIDTH = SX PANEL WIDTH - 1.95"[50]

3-PANEL FORMULAS (>94" PACKAGE WIDTH)
 PACKAGE WIDTH = CLEAR DOOR OPENING / 0.647 + 10.00"[254]
 CLEAR DOOR OPENING = 0.647 * PACKAGE WIDTH - 6.47"[164]
 UTILITY BREAKOUT WIDTH = PACKAGE WIDTH - 9.99"[254]
 SX DOOR PANEL WIDTH = 0.353 * PACKAGE WIDTH + 2.10"[53]
 SXS DOOR PANEL WIDTH = 0.353 * PACKAGE WIDTH - 3.28"[83]
 SO DOOR PANEL WIDTH = 0.294 * PACKAGE WIDTH + 1.93"[49]
 SWING OUT WIDTH = SX PANEL WIDTH - 1.95"[50]

3-PANEL TELESCOPIC TRACKLESS, AUTOMATIC

PROCARE™ 8500A SERIES

