

## iBIO: Integrated Biomedical Sciences Seminar Series

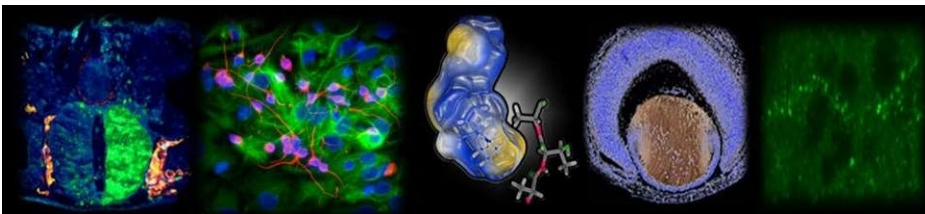
**Silvia C. Finnemann, Ph.D.**

Professor  
The Kim B. and Stephen E. Beplar Chair in Biology  
Department of Biological Sciences  
Fordham University

# “Photoreceptor outer segment renewal: Molecular mechanisms and link to retinal disease”

Tuesday, April 16, 2024  
Genome Auditorium and Zoom  
10 a.m.

\*To facilitate sharing of scientific data and ideas, seminar recording is prohibited



April  
**16**



**Silvia C. Finnemann, Ph.D.**  
Professor  
The Kim B. and Stephen E. Beplar Chair in Biology  
Department of Biological Sciences  
Fordham University

Host: Marie Burns

[meburns@ucdavis.edu](mailto:meburns@ucdavis.edu)